

E310-10EHI

Quick Assembly Guide

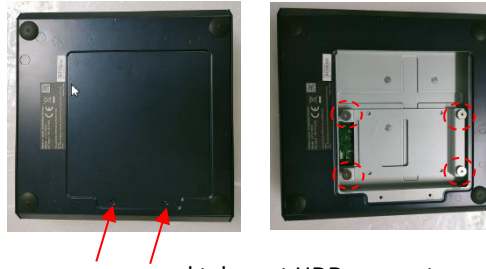


Open Top cover



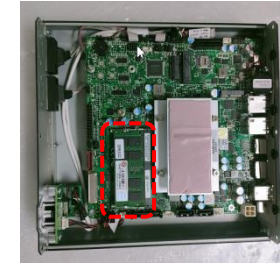
1. Loosen 6 screws from front wall and rear wall to open top cover.

Disassemble supporter and HDD Bracket



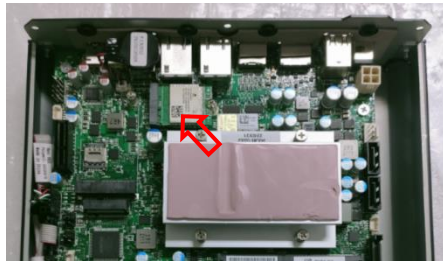
2. Loosen screws and take out HDD supporter and HDD bracket.

DRAM Maintenance



3. Install DIMM to MB on dash line area.

M.2 WiFi Installation



4. Install WiFi card on M.2 slot & plug in antenna IPEX header on WiFi card as arrow locations.

mSATA SSD / mPCIe expansion card Installation



5. Install mSATA SSD or mPCIe expansion card to PCIe slot.

M.2 SSD Installation

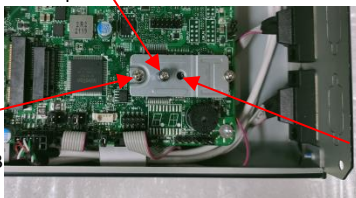


6. Install M.2 SSD on M.2 slot on dash line area.

M.2 B Key slot for B-M key SSD/LTE module

M.2 3052 lock point

Tighten M3 screw to fix bracket on MB



M.2 2260 lock point

7. Pick up M.2 transfer bracket from accessory and fix it on MB by M3 screw. It could be support 3052 or 2260 type of M.2 card and switch lock point by hexagon standoff.

SATA Power and SATA cable Installation



8. Insert SATA power and SATA cable in MB, and routing cable to back.

2.5 SSD Installation to Chassis



9. Install SSD to HDD bracket and install it to chassis.