

2nd Gen.

Industrial Monitor

Operation Manual

- ◆ Overview
- ◆ Installation
- ◆ Maintenance
- ◆ Fault Diagnosis and Exception Handling

 |  |  | **RoHS**

Dear User:

Thank you for purchasing the industrial monitors !

In order to let you know how to use this product quickly, we have written this manual for you. From which you will get good understanding of this industrial monitors from aspects of important notice, installation and maintenance methods. We hope you read this manual carefully before using this product.

We will do our best to ensure that the information provided in this manual is accurate and reliable. In order to continuously improve the product's reliable performance, the company may make some improvements and upgrades to the hardware part of the product, any changes in the product specification mentioned in this manual without further notice. Please understand it !

Thank you for your cooperation !

Warm Tips:

- 1.In order to use the industrial monitors correctly, please keep this manual carefully for reference.
- 2.Please do not disassemble the device by any agency or person who are not authorized by our company.
- 3.Only the professional maintenance personnel are allowed to repair the industrial monitor, for any damage, please contact us.
- 4.We reserve the right to modify this manual.

Important Notice

01. The monitor should be placed on the flat position horizontally.
02. Do not expose the monitor directly in sunlight and other heat sources.
03. Please unplug the power cable when thunderstorm weather with lightning occurs.
04. Do not step on the power cord or make the power cord entwined.
05. Please make sure the power supply voltage meets the device requirements before you supply power to the device.
06. Do not make the external wall socket overload to avoid causing fire or electric shock.
07. There must be an easily accessible power socket around the device.
08. Before cleaning the device, please unplug the power cord from the outlet and wipe the monitor with a dry, soft fabric (volatile matter not allowed).
09. Avoid the fragmentation, corrosion and any other damage to products or components (such as shell, LCD/LED panel, port, circuits etc.) caused by insect and rat or any other things inserting.
- 10.Do not contact with inappropriate temperatures, solvents, acid, water or moisture.
- 11.Do not allow any liquid to flow into or spill into the device to avoid a short circuit or fire.
- 12.Please do not open the device by any agency or person who are not authorized by our company.
- 13.Unplug the power cord if the device is not used for a long time.

Disclaimer

From the date of purchase, our company provides a one-year free warranty for the purchaser. However, the products repaired by unauthorized maintenance person will not provide quality assurance. There is a disclaimer about incorrect use, force majeure, and incorrect installation. If the products fail in use, we would provide after-sales service for free during the warranty period. While for products that are expired, we will charge the cost of materials and artificial services fee as per reasonable judgement. Please contact the service department for details once product damaged.

Transport and Packing List

In order to ensure the product intact, please check and accept the goods face-to-face with the carrier. Once damage occurs, please do not accept it. Please pay attention to hold the goods, packing materials and accessories intact, and get in touch with us immediately. If there is no objection of the product within the receiving period, it will be regarded that the products are acceptable, then we will not assume the responsibility for damaged goods (unless other special terms is included in contract). Besides, please check if all the following accessories are packed in the carton.

Power Adapter	Power Cable	Touch Cable (touch screen only)
Mounting Accessories	VGA Cable	Warranty Card and User Manual

CATALOG

1	Overview	05
2	Basic Parameter	07
3	Installation	08
4	Maintenance	11
5	Fault Diagnosis and Exception Handling	11
6	Interface Introduction	13
7	Button Operation	14
8	OSD Option/Adjustment	15
9	Toxic and Harmful Substances or Element Names and Contents	16

1 Overview

Second generation of industrial displays are designed for industrial and commercial application equipment. They have embedded or wall-mounted installation methods. The body is made of aluminum alloy, which has a solid structure, easy installation and use, and a touch screen. It has a manual touch function with low radiation, high quality and long life. The screen adopts industrial control A regulatory screen. The screen does not flicker; it is suitable for military, aerospace, telecommunications, electric power, metallurgy, transportation, railway, communications, finance, network, medical, security, factory automation and other fields.

01. The aluminum alloy chassis has a rugged and durable structure with triple protection design for fire protection, explosion protection, and dust protection.
02. The front panel is made of brushed aluminum alloy, and the screen surface is IP65 dustproof and waterproof.
03. Industrial-grade driver board, the components in the board are all industrial-grade, and support 365 * 24h non-stop operation.
04. Anti-interference performance, meeting EMI / EMC standards.
05. Equipped with VGA + HDMI + DVI interface + DC interface as standard, all interfaces adopt anti-falling design.
06. Support VGA / HDMI / DVI automatic identification signal channel.
07. Support wide voltage 12V-24V DC power input, support DC interface and DC connection terminal.
08. OSD can adjust the backlight brightness and multi-language menu selection, which will not affect the color saturation of the screen when adjusting the brightness.
09. Touch optional resistance / capacitance / infrared screen, which features high accuracy, high sensitivity, and has many industrial field application characteristics

09. Touch optional resistance / capacitance / infrared screen, which features high accuracy, high sensitivity, and has many industrial field application characteristics
10. Using LED backlight technology, the picture is colorful, high brightness, good contrast, wide viewing angle, longer life.
11. Support working temperature -10 °C -60 °C, customized -30 °C -80 °C.
12. High protection and anti-surge, the voltage rises 280V instantaneously, and the machine and adapter will not cause failure.
13. Anti-static (4KV-8KV) meets industry standards. Customers with high requirements can customize 16KV, with high anti-static level, which can greatly reduce the machine. Device failure rate.
14. The anti-vibration standard reaches GB2423, and it will not damage the machine when used in transportation / industrial / offshore operating environments.
15. Outdoor display can be installed with a visible screen under the sun, which is more convenient for users.
16. The product complies with ROHS environmental protection standards. The peak power consumption only needs to be less than or equal to 48W. It has the characteristics of low voltage, low power consumption, energy saving and quiet
17. The 3mm slim front panel is more suitable for being embedded in a cabinet and integrated into the cabinet. Supports multiple installation methods such as embedded, wall-mounted, desktop, cantilever

2 Basic Parameter



Panel Type	Industrial A grade, TFT
Backlight Type	LED backlight
Brightness	300mcd (higher brightness can be customized, up to 1500mcd.)
Display Color	16.7M
Pixel Pitch	0.264mm
Viewing Angle	160°/160 °(178° for optional)
Response Time	≤5ms
Installation Type	Embedded, wall-mounted, desktop, VESA, open frame, . etc.
Language Menu	English, German, French, Korean, Spanish, Chinese, Italian, Russian.
Touch Screen Type	Capacitive/Resistive/Mouse-control
Shell Material	Aluminum alloy material (black/silver/white)
Signal Interface	VGA, HDMI, DVI
Power Interface	DC12V-24V
Audio Interface	Audio input/output
Touch Interface	RJ45 (USB, COM for optional)
Anti-interference	EMC, EMI
Anti-vibration	5-19 HZ/1.0mm amplitude; 19-200HZ/1.0g acceleration.
Ambient Temp	Working temp: -10~60°C; Storage temp: -40~80°C.
Anti-static	4KV-8KV (≤16KV for optional)
AC Power Input	AC 100-240V 50/60Hz (power adapter), CCC, CE approved.
DC Power Input	DC12V-24V/4A (DC12V-36V for optional)
Power (standby)	≤2W
Power (Maximum)	≤24W

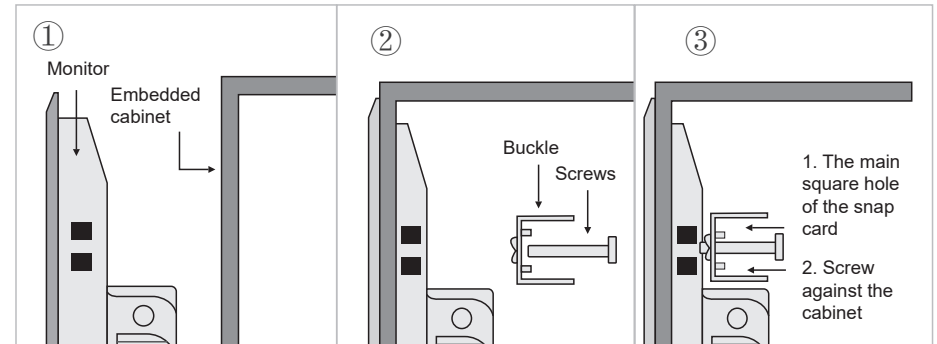
3 Installation



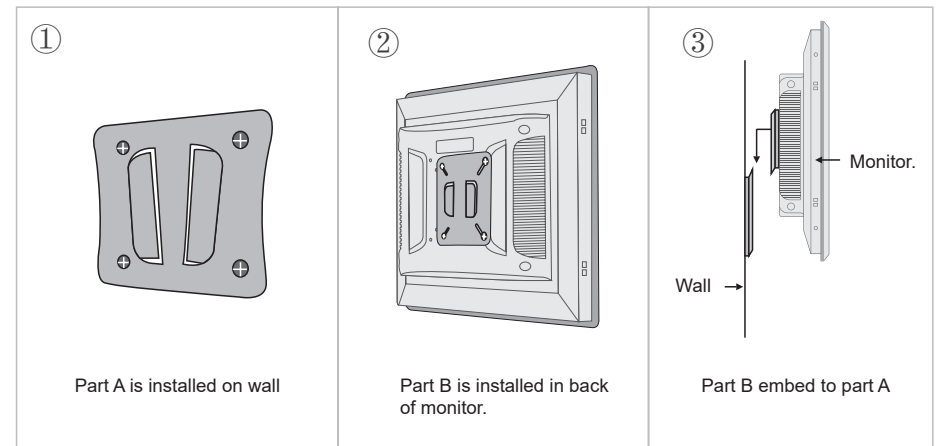
Notice:

1. Please do not place the monitor near radiator or any heat source material.
2. Please do not allow anything to press or wind the power cable and video cable.
3. Please do not place the monitor near water sources and wet places.
4. Please do not cover the ventilation hole in back of panel.

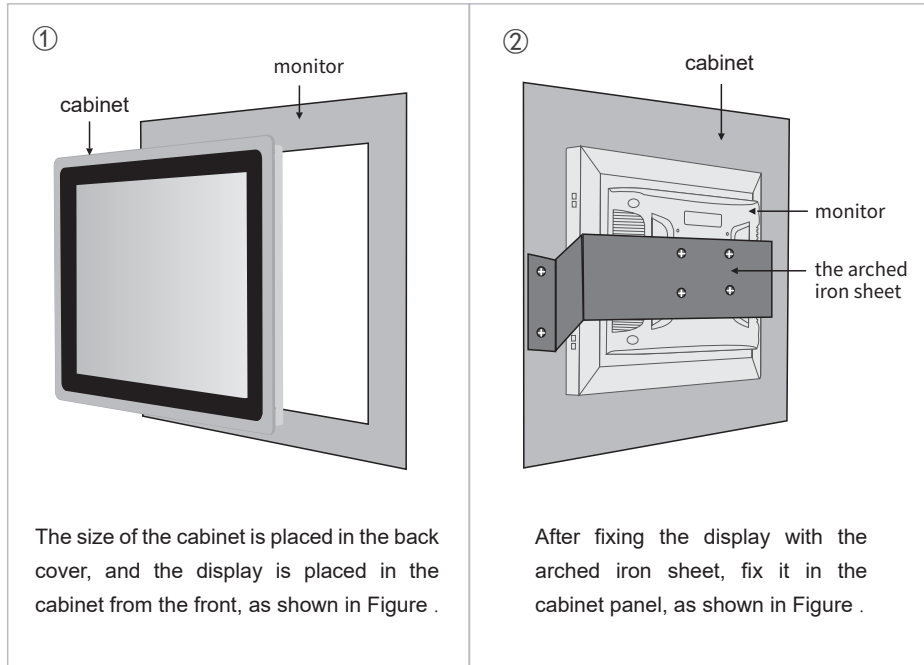
Embedded snap-in installation method: The machine has four snap-in holes to be installed, as shown in the following steps.



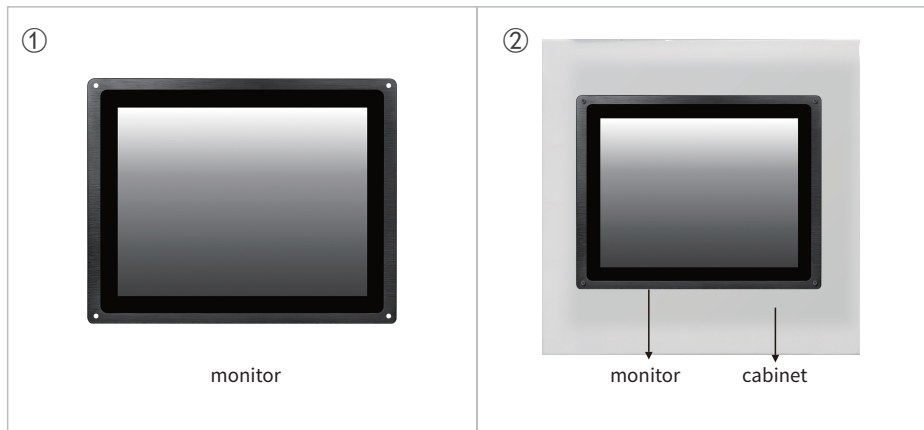
For wall-mounted, the bracket is composed with part A and part B, please embed part B into part A.



Mounting instructions:



Guidance on Rack Mounting



VESA Mount




VESA Mount



4 Maintenance >>>>

01. The power cord must be kept in good contact to avoid looseness, ignition and voltage fluctuation.
02. Please close the current program when the machine is shut down, and then click "start" - "shut down". After "no signal" is displayed, then turn the AC power switch off.
03. After turn the machine off, if you need to turn it on again, please wait at least 5 seconds, which will keep long service life of product. Please avoid frequent switching on/off operations.
04. If it is not used for a long time after shutdown, it is better to cut off the external main power supply (turn the power socket off or unplug the power plug).
05. In thunderstorm weather, it is recommended not to use the machine, and it is better to unplug all the power cables and network cables to prevent lightning stroke.
06. Please exit the device according to the correct operation procedure after using the external storage devices such as U disk and mobile hard disk.
07. Do not download, delete or change computer system files and settings at will.
08. Do not use the third-party software to repair the system at will.
09. When cleaning the machine, please pull the power plug out firstly, then spray the cleaning liquid on the soft cloth and then wipe it. Pay attention do not use too wet cloth to wipe it for preventing water from entering the machine.
10. If the sunlight is too bright or under direct sunlight, it will affect the visual communication of the touch display, and the direct light will damage the electronic components of the screen.
11. The humidity of the environment where the machine is located should be suitable. Too wet electronic equipment will affect the circuit and cause problems.

5 Fault Diagnosis and Exception Handling >>>>

 **Note:** Before contact our after-sales service department, please please carry out a simple inspection according to the following instructions.

※ Detection method of no display

1. Check whether there is poor contact between the power adapter and the power supply socket; whether the power adapter indicator lights up normally; confirm the model and specification of the power adapter.
2. After pressing the display switch button, check whether the power indicator on the panel lights up normally.
3. When the power indicator of the display is on normally, but still no display. Confirm whether the system has set the correct resolution; press the display menu to enter the menu and select the correct display mode.

4. When there is no signal on the display, check whether the video cable of the display is well connected with the host, replace the video cable and replace the host for exclusion test.

※ Troubleshooting method of blurry display

1. Do not connect the video cable, power the display on, then check whether the screen blurred.
2. Replace the video cable, and reconnect the video cable, then test and exclude the wire problem.
3. Replace the host and test, and exclude the problem of the host video output source.
4. Press the MENU button for re-setting.

※ How to switch to normal display mode when the screen displays a aging mode

1. Press menu button of the display, then switch to normal mode.

※ Check the display mode of the display interface and how to change the display mode (such as VGA, DVI, HDMI)

1. Connect the video cable well (such as VGA video cable), connect the power supply, and press the power on button of the display.
2. Press MENU button to enter the main menu, press "+ -" to enter the menu of selecting display output mode, and press Menu to confirm the selection.

※ How to calibrate the resistive touch screen and adjust the sensitivity

1. Install the resistance drive and start the resistance drive software.
2. For the setting part, touch phonation and linear calibration touch points are available. 9 points are general calibration with low accuracy; 25 points are precision calibration, which can improve touch accuracy (25 point calibration is recommended).
3. For the Tool part, it can be cleared and corrected. Linear setting: the 25 point correction mentioned above is done here to improve touch accuracy. ※ How to configure the capacitive touch screen when the capacitive touch screen has no response
1. Check whether the touch device is recognized under the control panel-device and printer.
2. Check whether the computer-device manager-driver is installed well.
3. Control panel-Tablet PC-Setting, operate according to the prompts.

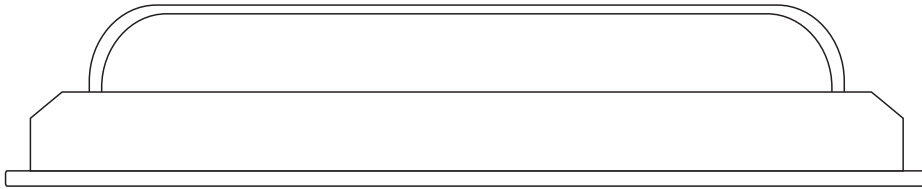
※ System refresh tool connection for monitor, installation driver, system refresh video (it will be fast by using Win10 system to upgrade program.)

1. Install refresh tool, the 2483 drive board, install the driver, and save the firmware file.
2. Connect the wire and power supply.
3. Select the firmware file and start to refresh system.

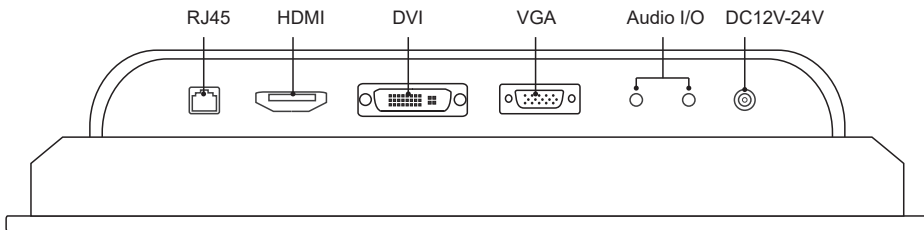
6 Interface Introduction



Upper bezel



Bottom bezel:

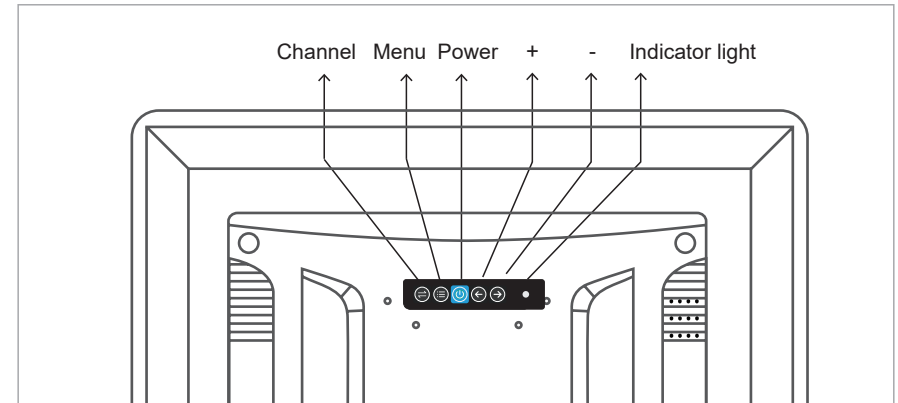


(The monitor supports automatic identification signal channel, no matter which port is connected by signal cable, the screen signal will switch automatically.)

7 Button Operation



Picture of rear cover of the monitor:



Button Operation Instructions

Symbol	Name	Instructions
≡	Channel	Enter channel options
≡	Menu	OSD will pop up for first press on this button
⏻	Turn on/off	Turn on/off for display screen
←	+	Select different submenus, the function of this key is the change of data value
→	-	Select different submenus, the function of this key is the change of data value.

8 OSD Option/Adjustment



The common functions of OSD menu: automatic adjustment of screen display effect; brightness adjustment; contrast adjustment; color adjustment, etc. To enter OSD menu interface, just press menu main button to adjust the following parameters.

MENU

PICTURE

Backlight - +100

Brightness - + 50

Contrast - +100

Sharpness - + 2

Light Sensor [Off]

Exit

MENU EXIT ← →

MENU

DISPLAY

Auto Adjustment

Auto Color

H Position

V Position

Pixel Clock

Phase

Exit

MENU EXIT ← →

MENU

AUDIO

Volume - + 50

Mute [Off]

Stand a long [Off]

Audio Source [Digital]

Exit

MENU EXIT ← →

MENU

OTHER

Reset

Menu Time - + 50

OSD H Position - + 50

OSD V Position - + 50

Language [English]

Transparency - + 50

Rotate [OFF]

Exit

MENU EXIT ← →

9 Toxic and Harmful Substances or Element Names and Contents



Statement of toxic and harmful substances or elements

Name and content identification of toxic and harmful substances or elements

The contents of toxic and harmful substances or elements in key components of industrial monitor are as follows:

Components Name	Toxic and harmful substances or elements					
	Pb	Hg	Cd	Cr6+	PBB	PBDE
Shell	○	○	○	○	○	○
Screen/Lamp tube	x	x	○	○	○	○
Plasma screen	x	○	○	○	○	○
Electronic board assembly	x	○	○	○	○	○
The power adapter	x	○	○	○	○	○
Power cable	○	○	○	○	○	○

★: Circuit board assembly includes printed circuit board and its components, such as resistance / capacitance / integrated circuit / connector, etc.

○: It means that the content of the toxic and harmful substances in all homogeneous materials is below the limit specified in the *Standard For The Limit Requirements Of Toxic And Harmful Substances In Electronic Information Products*.

x: It means they are meet the requirements of EU ROHS regulations (belong to exemption part).

10 Environmental Protection Use Period

This mark refers to the period of time (ten years), during which toxic and harmful substances or elements contained in electronic information products will not leak or mutate under normal operation conditions, and users will not cause serious environmental pollution or personal / property damage by using the electronic information products.

Attention:

1. When the monitor is not in use, please turn it off to reduce energy consumption.
2. On the premise of ensuring the use quality, the energy consumption of the monitor during operation process can be reduced by turning the brightness down.