

D210-10RI

21.5" Touch Panel PC
D210 with Intel Platform



Intel Braswell



IP65 (in front)
dust & water
resistant



Fanless Design



2 COM port



Wide Range
DC-in



Wireless LAN



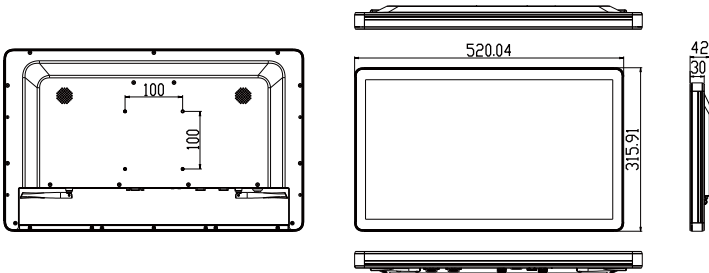
Multi touch



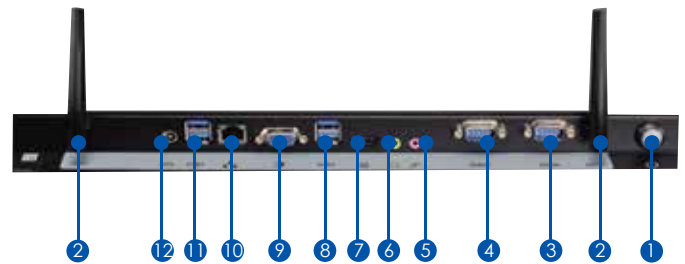
Feature

- Industrial-grade 21.5" Full HD TFT LCD with 40,000 backlight lifetime
- True-flat touchscreen with projected capacitive multi-touch control
- Front panel IP65-rated, fanless design
- Support multiple mounting modules(webcam, NFC/RFID, barcode)

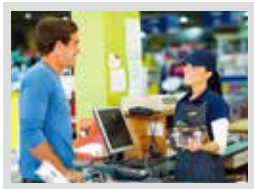
Dimension (mm)



I/O Interface



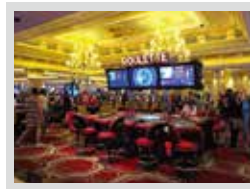
- | | | |
|-----------|------------|------------|
| ① Power | ⑤ Mic-in | ⑨ VGA |
| ② Antenna | ⑥ Line-out | ⑩ RJ45 |
| ③ COM | ⑦ HDMI | ⑪ USB 3.0 |
| ④ COM | ⑧ USB 3.0 | ⑫ DC input |



Retail



Public Service &
Hospitality



Commercial Education



Bedside Healthcare
Entertainment



Industrial Automation

Peripheral Options



Magnet Strip Reader



Smart Card and
Magnetic Stripe Reader



RFID Reader



Barcode Scanner



5MP Camera

D210-10RI

Industrial Panel PC

Industrial Panel PC

LCD

Display Type	21.5" TFT-LCD
Max. Resolution	1920 x 1080
Max. Colors	16.7M (8 bit/color)
Luminance	250 cd/m2
Viewing Angle	178°/178°
Led Backlight (Hours)	40000

TOUCH SCREEN

Type	P-CAP
Touch Screen	True-flat 10 points

SYSTEM

PD10RI	Processor	Intel® Celeron® Processor N3160 (Quad Core, 2M Cache, up to 2.24GHz)
	Chipset	Integrated
	System Memory	DDR3L 1866MHz, 2 x 204-pin SO-DIMM, Max. 8GB (Non-ECC)
	Ethernet	Realtek RTL8111G Giga LAN
	I/O Port	1 x DC Jack , 4 x USB 3.0, 1 x RJ45 , 1 x VGA , 1 x HDMI, 1 x Line-out 1 x Mic-in, 2 x RS232 (RS232/RS422/RS485)
	Watchdog Timer	1~255 steps by software program
	Storage Disk Drive	1 x SATA 2.5" HDD/SSD bay
	Expansion Slot	1 x Mini PCIe Full/Half size 1 x Mini PCIe Half size
	Stereo Speaker	2 x 3W
	OS Support	Windows 7 32bit / 64bit Windows 10 64bit Linux (support by request)

POWER REQUIREMENT

Power Input	DC 8 ~ 24V
Power Adapter	AC to DC, DC19V/ 3.4A, 65W adapter

MECHANICAL

Mounting	VESA 100/ Stand
Dimension	520 x 315 x 42 (mm)
Weight	10kg (22.04 lb)

ENVIRONMENTAL

Operating Temperature	0°C ~ 40°C (32°F ~ 104°F)
Storage Temperature	-20°C ~ 60°C (-4°F ~ 140°F)
Storage Humidity	10% ~ 95% @40°C non-condensing
Vibration Resistance	Operating Random vibration Test 5-500Hz, 0.3Grms@with HDD
Shock Resistance	Operating 50 G peak (3 ms duration)
EMC	CE, FCC Class A
Front Panel Protection	IP65 Compliant

Ordering Information

System I/O

Model Number	CPU	VGA	DisplayPort	HDMI	Line-out / Mic-in	USB 3.0 / 2.0	RS232	LAN	Wifi / BT	Power
D210-10RI-N3160	Celeron N3160	1	0	1	1 / 1	4 / 0	2	1	Optional	DC-in 8~24V

Accessory Information

Model Number	Part Number	Description
MSRD151210-R10	5412D7680002	Compact Intelligent MagStripe Swipe Reader
MSRSC151210-R10	5412D7680007	Secure EMV Chip Card and Magnetic Stripe Reader
NRFID151210-R10	5412D7680006	HF RFID / 13.56MHz NFC reader
CAM50P151210-R10	5412D7680005	5M webcam
BS151210-R10	5412D7680002	2D barcode Scanner