

# Product Change Notification

**Issue Date:** January 13, 2015

**Product Name:** RHD-302SATA-RS-R10

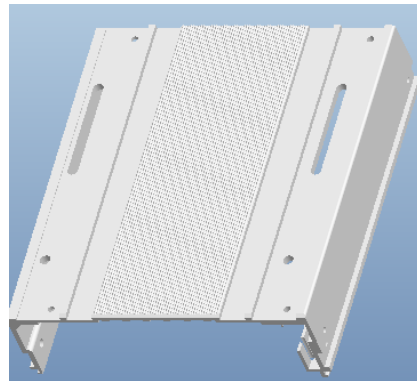
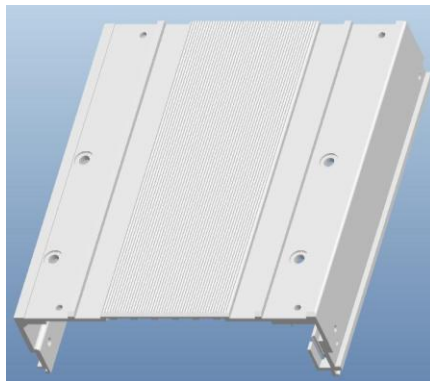
**Status:** Running change

This notice is to inform you of changes to the RHD-302SATA-RS-R10.

**Reason for Change**

1. In order to increase the compatibility of 6TB 3.5" HDD installation, we modify the bottom cover by adding two ellipse holes also change the middle screw holes to ellipse.
2. In order to increase the compatibility of SAS and SATA SSD/HDD installation, we modify SATA connector by remove the bulkhead between power 15pin and data 7pin.

**Description of Change**



Change design from

to



to



**Affected Model**

Affected Model	New Version
RHD-302SATA-RS-R10	RHD-302SATA-RS-R11

**Affected by This Change**

- Specifications
  Dimensions
  Appearance
  Package
  Label
  BIOS
  Driver

For more details please refer to the latest datasheet or visit <http://www.ieiworld.com>.

*Best Regards,*

*Monica Wu*

*Project Manager*

*IEI Integration Corp.*