

# Product Change Notification

**Issue Date:** February 16, 2015

**Product Name:** NANO-QM871 SBC

**Status:** Running change

## Reason for Change

Increase iRIS-1010 support for better remote control management.

## Description of Change

1. Set default as removing PCI/104-Express™ Type II slot on top side, this function will be optional.
2. Increase iRIS-1010 slot on bottom side.
- 3.

## Affected Model

Affected Model	New Version
NANO-QM871-i7-R10	NANO-QM871-i1-i7-R10
NANO-QM871-i5-R10	NANO-QM871-i1-i5-R10
NANO-QM871-i3-R10	NANO-QM871-i1-i3-R10
NANO-QM871-C-R10	NANO-QM871-i1-C-R10
NANO-QM871-i5E-R10	NANO-QM871-i1-i5E-R10
NANO-QM871-i3E-R10	NANO-QM871-i1-i3E-R10
NANO-QM871-CE-R10	NANO-QM871-i1-CE-R10

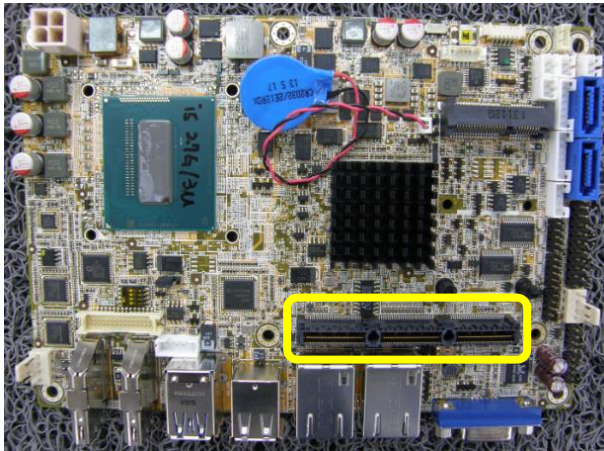
## Affected by This Change

Specifications
  Dimensions
  Appearance
  Package
  Label
  BIOS
  Driver

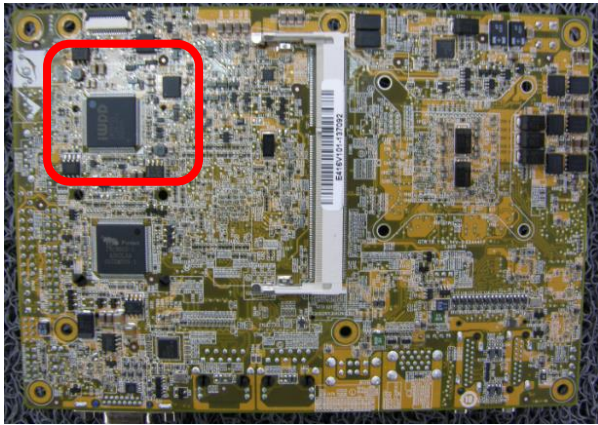
For more details please refer to the latest datasheet or visit <http://www.ieiworld.com>.

**Affected Model**

Top side

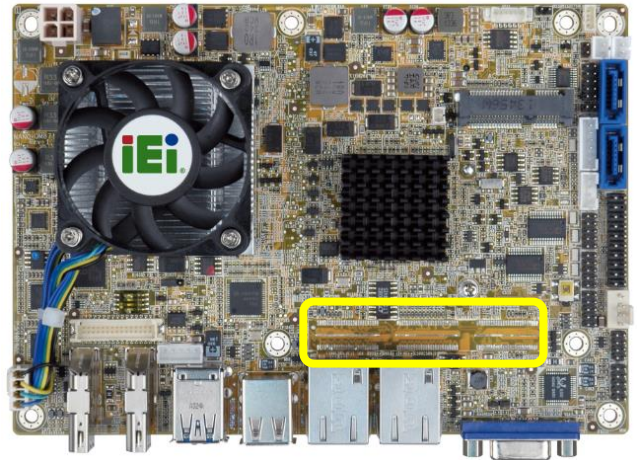


Bottom side



**New Version**

Top side (Remove PCI/104 slot)



Bottom side (Add iRIS-1010 slot)

