

iKarPC-08A

Vehicle Computer Series



Features

- 8" TFT sunlight readable LCD touch screen
- Intel® Atom™ Z510 1.1 GHz processor
- Pre-installed Windows® XP Embedded
- Built-in HSUPA/GPRS/GSM, Wi-Fi and Bluetooth
- Built-in 32-channel GPS receiver
- Supports On-Board Diagnostics (OBD)

Specifications



Model	iKarPC	
Display	LCD Size	8" TFT-LCD (Sunlight readable)
	Brightness (cd/m ²)	600 cd/m ² High Brightness
	Max Resolution	800 x 480 pixels WVGA
	Viewing Angle	60/60/50/50 Deg.
	Touch Screen	5-wire resistive type touch
System	CPU	Intel® Atom™ Z510 1.1 GHz
	Chipset	Intel® US15WP
	Operating System	Microsoft® Windows® XP Embedded
	Memory	On-board 1 GB DDR2 533 MHz
Communication	Storage	4 GB CompactFlash® SD Card Slot
	Wireless LAN	Wi-Fi 802.11b/g/n
	Bluetooth	Bluetooth V2.0+ EDR (Class 1)
	Modem	WCDMA/HSUPA
	GPS	GPS
Multimedia	Audio	1 x Line-in 1 x Line-out 1 x 3 W Speaker
	Camera	0.3-megapixel CMOS Camera
LED Indicators & Buttons	Indicators	Wi-Fi/Bluetooth/HDD/3.75G/DVB-T/Power Status LED
	Hot Key & Buttons	F1~F6 Function Key, Direction Key, Power Button
I/O Interface	USB	2 x USB 2.0
	Serial	1 x DB-9 OBD-II
	LAN	1 x DB-9 RS-232/422/485 (Software selectable w/ 5V DC) 1 x 10/100/1000 Mbps GbE RJ-45
Power	Cigarette Lighter Power	Cigarette Lighter Power Cable DC 9~30V
	ACC Power	Manual power mode and ignition detection supported ACC power on/off mode with software configurable delay time
Environment	Operating Temperature	-20°C ~ +60°C
	Storage Temperature	-30°C ~ +70°C
	Humidity	5%~95%, non-condensing
	Drop Survival	1 M
	Environmental Protection	IP54 compliant front panel (Water, dust and splash resistant)
Physical Characteristics	Certification	CE/FCC/e-Mark/ISO7637
	Dimensions (LxWxH) (mm)	261 x 162 x 44
	Net Weight	1.7kg

- 1 IEIMobile Solutions
- 2 Automation Panel Solutions
- 3 PACSmate Medical Solutions
- 4 Optional Peripherals



Optional Accessory List

Item	Part Number	Description
Power Adapter	IVIPOWER-4PIN-R10	Power Adapter, PFC; Vin:90~264VAC; 60W; Vout: 12VDC; Din 4Pin/lock; CCL; RoHS
Bracket	iKarPC-W08A-MK01-R10	iKarPC 100 x 100 VESA mount kit
Bracket	iKarPC-W08A-MK02-R10	iKarPC ram-mount 100 x 100 VESA mount kit

Packing List

Item	Part Number	Q'ty
Remote Controller	7Z000-SLPCB004-RS	1
GPS/3.75G Integrate Antenna	32506-000100-100-RS	1
ACC Power Cable	32002-001900-100-RS	1
Cigarette Lighter Power Cable	32002-004000-100-RS	1
OBD-II Cable	32025-000300-100-RS	1
J1939 Cable	32025-000400-100-RS	1
Ues's Manual CD-ROM	7B000-000959-RS	1
IEI One Key Recovery CD	7B000-000781-RS	1



Ordering Information

Part Number	Description
IKARPC-W08A-510-HU-R12	8.0" TFT-LCD 600 cd/m ² WVGA In Vehicle PC with Intel® Atom™ Z510 1.1GHz CPU, 1GB SDRAM, 802.11b/g/n Wireless, Bluetooth, HSUPA, OBD-II, Touch screen, 0.3-megapixel Camera, XPE OS, 4GB CF, RoHS
IKARPC-W08A-510-HW-R12	8.0" TFT-LCD 600 cd/m ² WVGA In Vehicle PC with Intel® Atom™ Z510 1.1GHz CPU, 1GB SDRAM, 802.11b/g/n Wireless, Bluetooth, HUAWAI HSUPA, OBD-II, Touch screen, 0.3-megapixelCamera, XPE OS, 4GB CF, RoHS

iKarPC-Lite

Vehicle Computer Series



Features

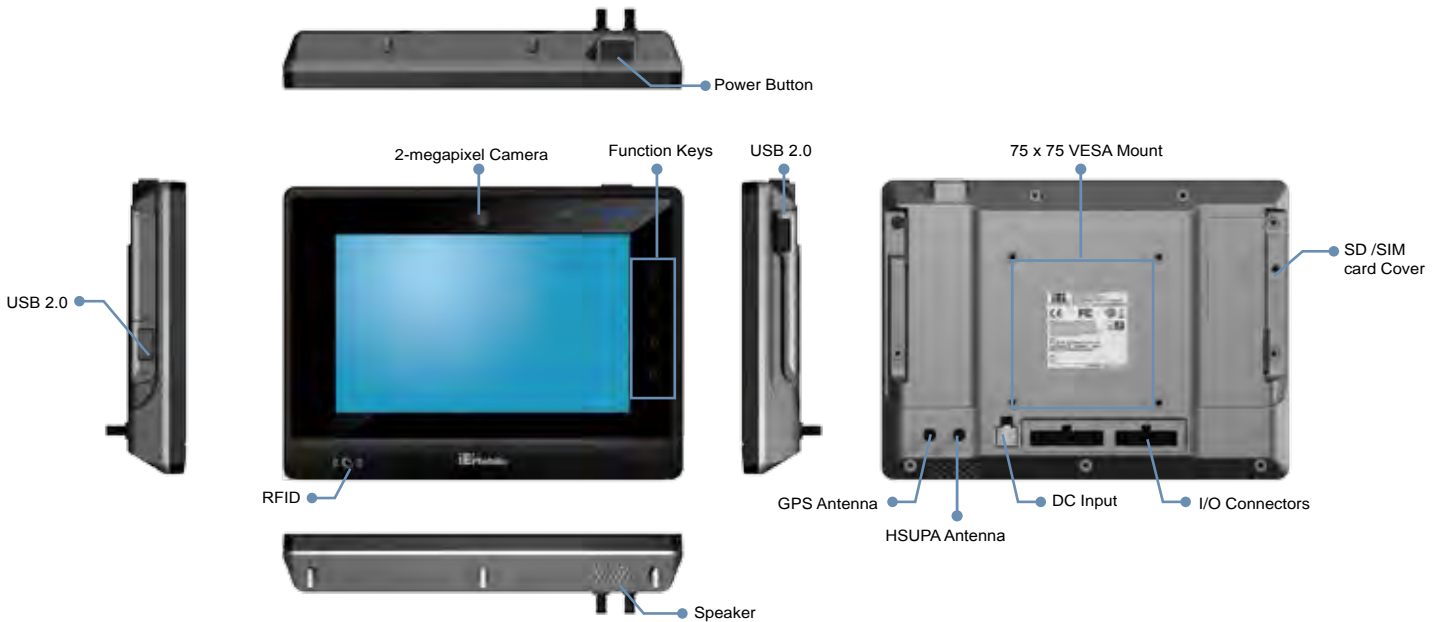
- 7" TFT sunlight readable TFT LCD with projective capacitive touchscreen
- TI ARM Cortex-A8 AM3715 1GHz
- Pre-installed Android 4.1 operating system
- Built-in HSUPA/GPRS/GSM, Wi-Fi and Bluetooth
- Built-in GPS receiver
- Supports On-Board Diagnostics: one CAN 2.0B or OBD-II
- On-board RFID with antenna



Specifications

Model	iKarPC-Lite	
Display	LCD Size	7" TFT LCD with LED backlight
	Brightness (cd/m²)	500 cd/m² high brightness
	Max Resolution	800 x 480 pixels WVGA
	Viewing Angle	60/70/70/70
	Touch Screen	Projective capacitive type
System	CPU	TI ARM Cortex A8 AM3715 1GHz
	Operating System	Android 4.1.2
	Memory	On-board 4GB iNAND flash and 512 MB DDR SDRAM
	Storage	Built-in SD card slot (supports SD 2.0, max. 32GB)
Communication	Wireless LAN	Wi-Fi 802.11b/g/n
	Bluetooth	Bluetooth® 2.1+ EDR (Class I)
	Data Rate	WCDMA/HSDPA or GPRS
	GPS	GPS w/ external antenna
Multimedia	Audio	1 x Line out (R+L) (3-pin) 1 x Mic in (3-pin)
	RFID	13.56MHz ISO14443 A/B Read-Write Capable ISO14443A (Mifare) ISO14443B (Felica)
LED Indicators & Buttons	Camera	2-megapixel CMOS camera
	Indicators	3.5G/Wi-Fi/BT/Power status LED
I/O Interface	Hot Keys & Buttons	4 x Function keys
	USB	2 x USB 2.0 Full Speed
	Serial	1 x OBD-II (7-pin) 1 x USB (4-pin) 1 x RS-232 (9-pin)
	LAN	1 x 10/100/1000 Mbps GbE (4-pin)
	CAN	1 x CAN 2.0B (2-pin)
Power	Digital I/O	2-bit input (3-pin), 2-bit output (3-pin)
	Cigarette Lighter Power	Cigarette lighter power cable, DC 9~36V
Environment	ACC Power	ACC power on/off mode with software configurable delay time
	Operating Temperature	-20°C to +60°C
	Storage Temperature	-30°C to +70°C
	Humidity	5%~95%, non-condensing
	Drop Survival	1M
	Environmental Protection	IP 54 compliant front panel (water, dust and splash resistant)
Physical Characteristics	Certifications	CE/FCC/e-MARK/ISO7637
	Dimensions (LxWxH) (mm)	210 x 154 x 28
	Net Weight	0.8kg

- 1 IEIMobile Solutions
- 2 Automation Panel Solutions
- 3 PACSmate Medical Solutions
- 4 Optional Peripherals

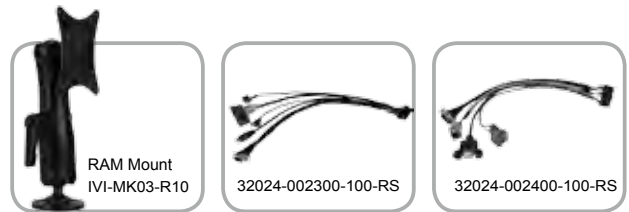


Optional Accessory List

Item	Part Number	Description
Power Adapter	IVIPOWER-4PIN-R10	Power Adapter; 63000-FSP040DGAA1107-RS + Switching Cable 32002-005100-100-RS
Cigarette Lighter Power Cable	32002-004000-100-RS	Round Cable; Power Cable; 2;1000MM; 18AWG; (A) Cigarette Lighter (10A 250V) + LED; (B) Power DIN 4PIN MALE + LOCK; RoHS
RAM Mount	IVI-MK03-R10 IVI-MK04-R10	138mm 75x75 VESA mount stand 286mm 75x75 VESA mount stand
20 pin I/O Cable	32024-002400-100-RS	300MM; 24AWG; (A) TERMINAL BLOCK 3P P=5.08; (C) PCB JACK:RJ45 8P8C; (E) MOLEX 5557-2000 P=3.0;ONE PCS PKG W/ LABEL (B) USB A TYPE FEMALE+2 NUT; (D) D-SUB 9P MALE;
24 pin I/O Cable	32024-002300-100-RS	300MM; 22AWG; (A) TERMINAL BLOCK 8P P=5.08; (C) PHONE JACK 3.5_5P+NUT; (E) D-SUB 9P MALE; (B) PHONE JACK 3.5_3P+NUT; (D) RCA JACK,WHITE; (F) MOLEX 43025-2400 P=3.0; ONE PCS PKG W/ LABEL

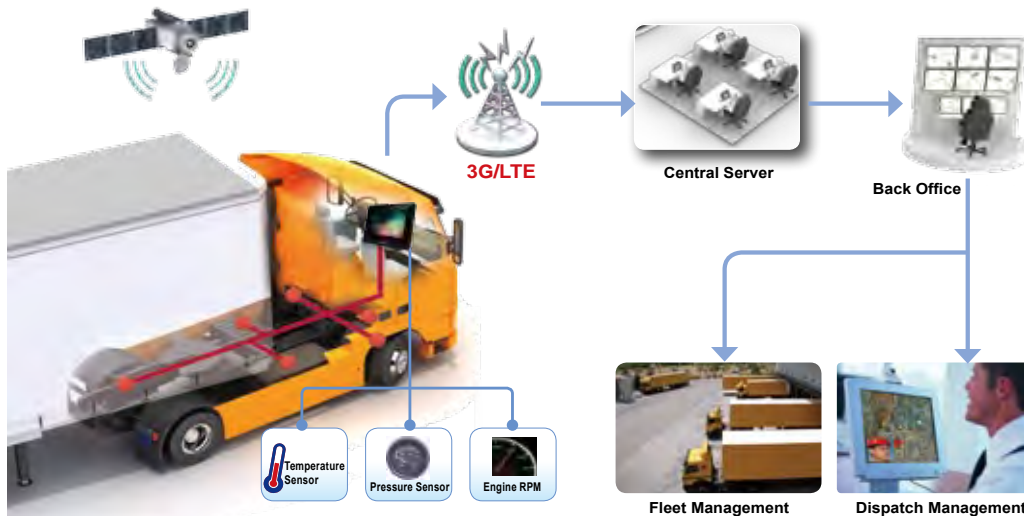
Packing List

Item	Part Number	Q'ty
3.75G+GPS Antenna	32506-000100-100-RS	1
ACC Power Cable	32002-001900-100-RS	1
CD-ROM	7B000757-RS	1



Ordering Information

Part Number	Description
IKARPC-07A-A8-R10	7" 500 cd/m ² In-Vehicle Panel PC with T1 Cortex-A8 AM3715 Processor, 1GHz , 4GB INAND flash, 512 MB DDR SDRAM, OBD-II, HSUPA , GPS, Wi-Fi b/g/n, BT 2.1, 2-megapixel Camera, RoHS



- 1 IEIMobile Solutions
- 2 Automation Panel Solutions
- 3 PACSmate Medical Solutions
- 4 Optional Peripherals