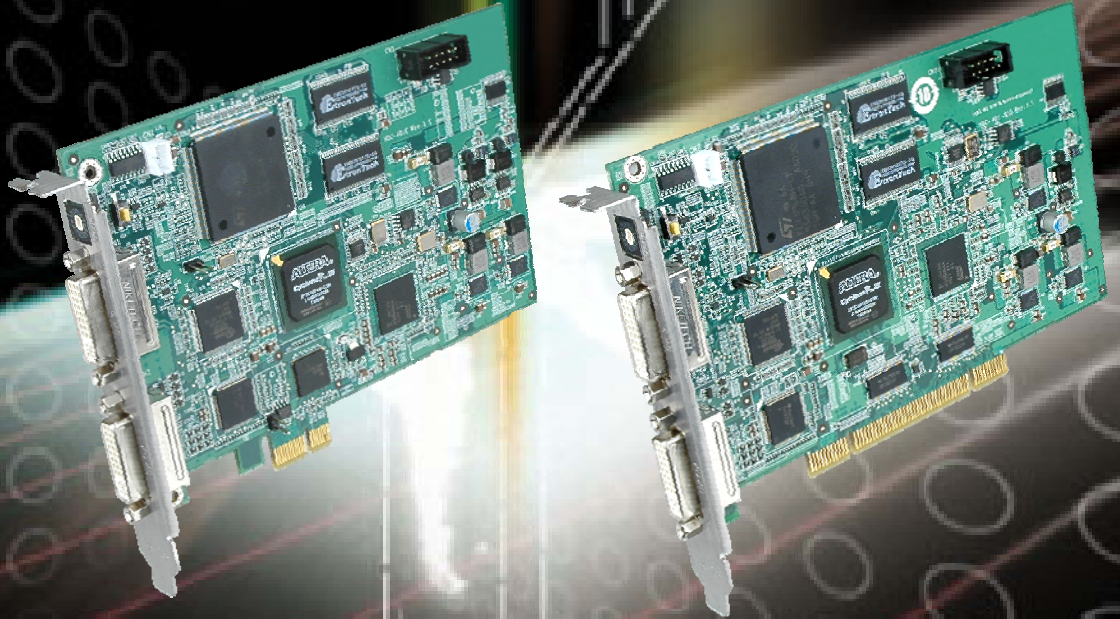




IEI Technology Corp.



**MODEL:**  
**HDC-4x Series**

**Video Capture Card with  
DVI-I Input Channel, 1920x1080 @60p,  
and Hardware H.264 Codec**

# **User Manual**

Rev. 2.00 – 3 October, 2012



# Revision

---

<b>Date</b>	<b>Version</b>	<b>Changes</b>
3 October, 2012	2.00	Updated for new software version v2.00
24 August, 2011	1.00	Initial release

# Copyright

---

## **COPYRIGHT NOTICE**

The information in this document is subject to change without prior notice in order to improve reliability, design and function and does not represent a commitment on the part of the manufacturer.

In no event will the manufacturer be liable for direct, indirect, special, incidental, or consequential damages arising out of the use or inability to use the product or documentation, even if advised of the possibility of such damages.

This document contains proprietary information protected by copyright. All rights are reserved. No part of this manual may be reproduced by any mechanical, electronic, or other means in any form without prior written permission of the manufacturer.

## **TRADEMARKS**

All registered trademarks and product names mentioned herein are used for identification purposes only and may be trademarks and/or registered trademarks of their respective owners.

# Table of Contents

<b>1 INTRODUCTION.....</b>	<b>1</b>
1.1 OVERVIEW.....	2
1.2 MODEL VARIATIONS .....	2
1.3 FEATURES.....	3
1.4 CONNECTOR OVERVIEW .....	3
1.4.1 HDC-401 .....	3
1.4.2 HDC-401E .....	4
1.5 SPECIFICATIONS .....	5
1.6 DIMENSIONS.....	7
1.6.1 HDC-401 Dimensions.....	7
1.6.2 HDC-401E Dimensions .....	8
<b>2 HARDWARE INSTALLATION.....</b>	<b>9</b>
2.1 UNPACKING.....	10
2.1.1 Anti-static Precautions.....	10
2.1.2 Unpacking Precautions.....	10
2.1.3 Unpacking Checklist .....	11
2.2 HARDWARE INSTALLATION PROCEDURE.....	12
2.3 VIDEO CAPTURE CARD INSTALLATION.....	12
2.4 DVI-I DEVICES INSTALLATION.....	13
2.5 SET THE ROTARY SWITCH SETTINGS .....	14
<b>3 DRIVER AND APPLICATION INSTALLATION (WINDOWS) .....</b>	<b>16</b>
3.1 OVERVIEW.....	17
3.2 DRIVER INSTALLATION.....	18
3.2.1 Uninstall Driver.....	21
3.3 SOFTWARE INSTALLATION (WINDOWS) .....	21
3.3.1 System Requirements.....	21
3.3.2 HDCapture Demo Program Installation.....	22
<b>4 HDCAPTURE APPLICATION (WINDOWS) .....</b>	<b>25</b>

## HDC-4x Series Video Capture Card

4.1 HDCAPTURE OVERVIEW .....	26
4.2 VIDEO CAPTURE.....	26
4.3 VIDEO DECODING .....	29
4.4 VIDEO BYPASS .....	31
4.5 UNINSTALL HDCAPTURE .....	31
4.6 FAQ.....	32
<b>A INPUT RESOLUTION AND VIDEO FORMAT .....</b>	<b>33</b>
A.1 SUPPORTED INPUT RESOLUTION AND VIDEO FORMAT .....	1
A.1.1 VGA Input, SW=0.....	1
A.1.2 VGA Input, SW=1 .....	3
A.1.3 VGA Input, SW=2 .....	5
A.1.4 DVI Input, SW=3.....	7
A.1.5 DVI Input, SW=4.....	9
A.1.6 DVI Input, SW=5.....	11
A.1.7 VGA Input, SW=6.....	13
A.1.8 DVI Input, SW=7.....	15
A.1.9 VGA Input, SW=8.....	17
A.1.10 DVI Input, SW=9.....	19
<b>B HAZARDOUS MATERIALS DISCLOSURE .....</b>	<b>1</b>
B.1 HAZARDOUS MATERIAL DISCLOSURE TABLE FOR IPB PRODUCTS CERTIFIED AS ROHS COMPLIANT UNDER 2002/95/EC WITHOUT MERCURY .....	2

# List of Figures

---

Figure 1-1: HDC-4x Series Video Capture Card.....	2
Figure 1-2: HDC-401 Connector Overview .....	4
Figure 1-3: HDC-401E Connector Overview.....	4
Figure 1-4: HDC-401 Dimensions (mm).....	7
Figure 1-5: HDC-401E Dimensions (mm) .....	8
Figure 2-1: HDC-4x Series Installation .....	13
Figure 2-2: DVI-I Devices Connect to the Video Capture Card .....	14
Figure 2-3: Rotary Switch .....	14
Figure 3-1: Windows Security .....	18
Figure 3-2: Windows Warning Window .....	19
Figure 3-3: Device Driver Installation Wizard .....	19
Figure 3-4: Driver Installing .....	20
Figure 3-5: Driver Installation Complete .....	20
Figure 3-6: Device Manager.....	21
Figure 3-7: HDCapture Setup Wizard.....	23
Figure 3-8: Select Installation Folder.....	23
Figure 3-9: Confirm Installation .....	24
Figure 3-10: Installation Complete.....	24
Figure 4-1: HDCapture .....	26
Figure 4-2: Encoding Settings.....	28
Figure 4-3: Video Capture Control .....	29
Figure 4-4: Decoding Settings.....	30
Figure 4-5: Uninstall HDCapture .....	31
Figure 4-6: Uninstall HDCapture Confirmation Window.....	32

# List of Tables

---

Table 1-1: HDC Video Capture Card Models .....	2
Table 1-2: Specifications .....	6
Table 2-1: Package List Contents .....	11
Table 2-2: HDC Video Capture Card Models .....	15

Chapter

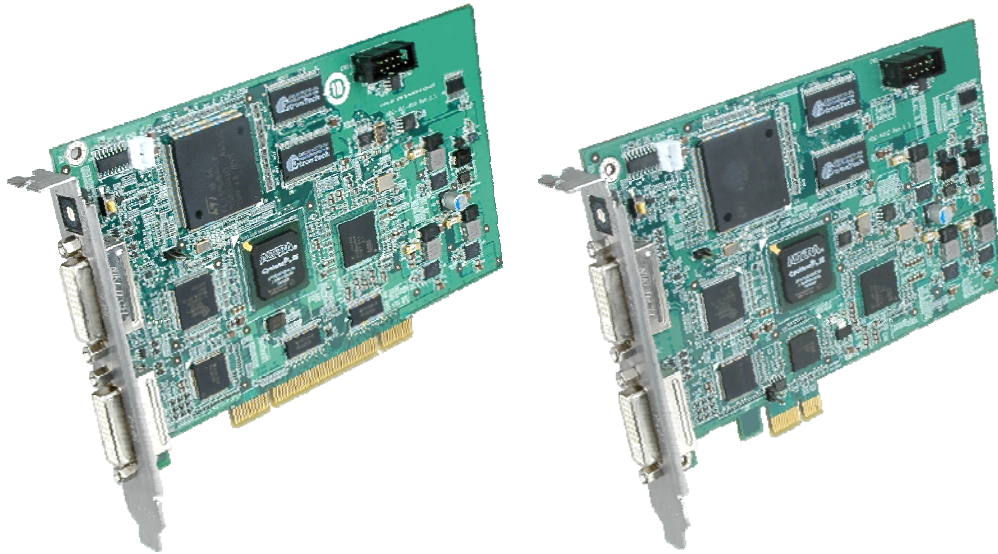
1

# Introduction

---



## 1.1 Overview



**Figure 1-1: HDC-4x Series Video Capture Card**

The low power HDC-4x Series video capture card supports 1080p Full HD video via DVI-I connection. The HDC-4x Series video capture card is equipped with the high-performing codec component with DVI-I video input channels.

A software development kit (SDK) is shipped with each card and the flexible system architecture simplifies the integration of cameras, video signal processing, storage and video management and or security applications.

## 1.2 Model Variations

There are two HDC-4x Series video capture card models with different connecting interfaces. These models are listed below:

Model Name	Interface	Video Input	Video Output
HDC-401	PCI	1-channel DVI-I	1-channel DVI-I
HDC-401E	PCIe	1-channel DVI-I	1-channel DVI-I

**Table 1-1: HDC Video Capture Card Models**

## HDC-4x Series Video Capture Card

### 1.3 Features

Some of the HDC-4x Series video capture card features are listed below.

- DVI-I input channel up to 1920x1080@60p
- Encoding or decoding with 1920x1080@60p or 1280x720@60p (per channel)
- Pass through for transmitting uncompressed video up to 1080p resolution
- Capture or record HD video in H.264 format
- Playback the recordings on DVI-I monitor or television
- Reduce the amount of hard disk space needed by real-time H.264 recording compression capability
- Low power consumption
- Software development kit (SDK)

### 1.4 Connector Overview

The following sections introduce the two models of the HDC-4x Series.



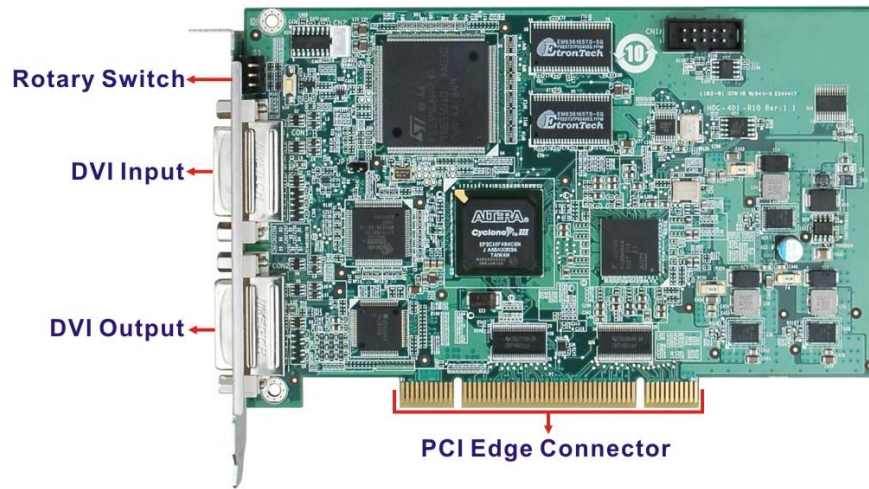
#### NOTE:

The other connectors, jumpers and interfaces on the board not specified below are for R&D diagnostic purposes and should not be used by the end user.

---

#### 1.4.1 HDC-401

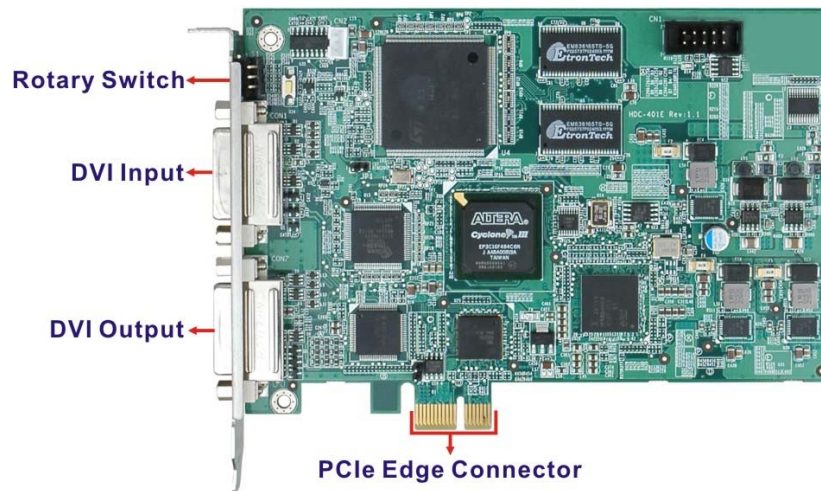
The HDC-401 comes with one DVI-I input connector and one DVI-I output connector. A PCI edge connector on the bottom of the capture card enables the HDC-401 to interface with a motherboard.



**Figure 1-2: HDC-401 Connector Overview**

### 1.4.2 HDC-401E

The HDC-401E comes with one DVI-I input connector and one DVI-I output connector. A PCIe edge connector on the bottom of the capture card enables the HDC-401E to interface with a motherboard.



**Figure 1-3: HDC-401E Connector Overview**

## HDC-4x Series Video Capture Card

### 1.5 Specifications

The HDC-4x Series specifications are listed in the table below:

	HDC-401	HDC-401E
<b>Video Input Channels</b>	One	One
<b>Video Input Type</b>	DVI-I (DVI/VGA)	DVI-I (DVI/VGA)
<b>Video Output Channel</b>	One	One
<b>Video Output Type</b>	DVI-I (DVI/VGA)	DVI-I (DVI/VGA)
<b>Interface</b>	PCI	PCIe x1
<b>VIDEO PROCESSING</b>		
<b>Resolution</b>	1920 x 1080 60p, encoding bit rate from 6Mbps to 30Mbps. 1280 x 720 60p, encoding bit rate from 4Mbps to 24Mbps.	
<b>Video Engine</b>	H.264/AVC High Profile Level 4.2	
<b>Color Space Support</b>	RGB 444	
<b>SYSTEM REQUIREMENTS</b>		
<b>System</b>	<p><b>Windows:</b></p> <p>Microsoft Windows XP Service Pack2 (SP2) (32-bit version) Microsoft Windows 7 (32-bit) Microsoft DirectX 9.0c Microsoft .NET Framework 3.0/3.5/4.0 Win7DSFilterTweaker tool (for Windows 7 OS only) Visual C++ 2005 &amp; 2008 Redistributable</p> <p><b>Linux:</b></p> <p>Fedora 16 (Kernel 3.1.0)</p>	
<b>SOFTWARE SUPPORT</b>		
<b>Device Driver</b>	Driver for Windows XP, Windows 7 (32-bit) and Linux Fedora 16	

	HDC-401	HDC-401E
<b>SDK</b>	SDK provided with demo program and sample source code Windows: Provide SDK and demo program with sample source code in C# Linux: Provide SDK and driver/demo program with sample source code in C	
<b>OTHERS</b>		
<b>Dimensions (WxH) (mm)</b>	167.6 x 106.7	155 x 111
<b>Operating Temperature</b>	0°C – 65°C (32°F - 149°F), non-condensing	
<b>Power Consumption</b>	6.32 W 5 V@0.83 A 3.3 V@0.65 A	7.1 W 12 V@0.34 A 3.3 V@0.89 A

**Table 1-2: Specifications**

## HDC-4x Series Video Capture Card

### 1.6 Dimensions

The dimensions for the HDC-4x Series are listed in the following sections.

#### 1.6.1 HDC-401 Dimensions

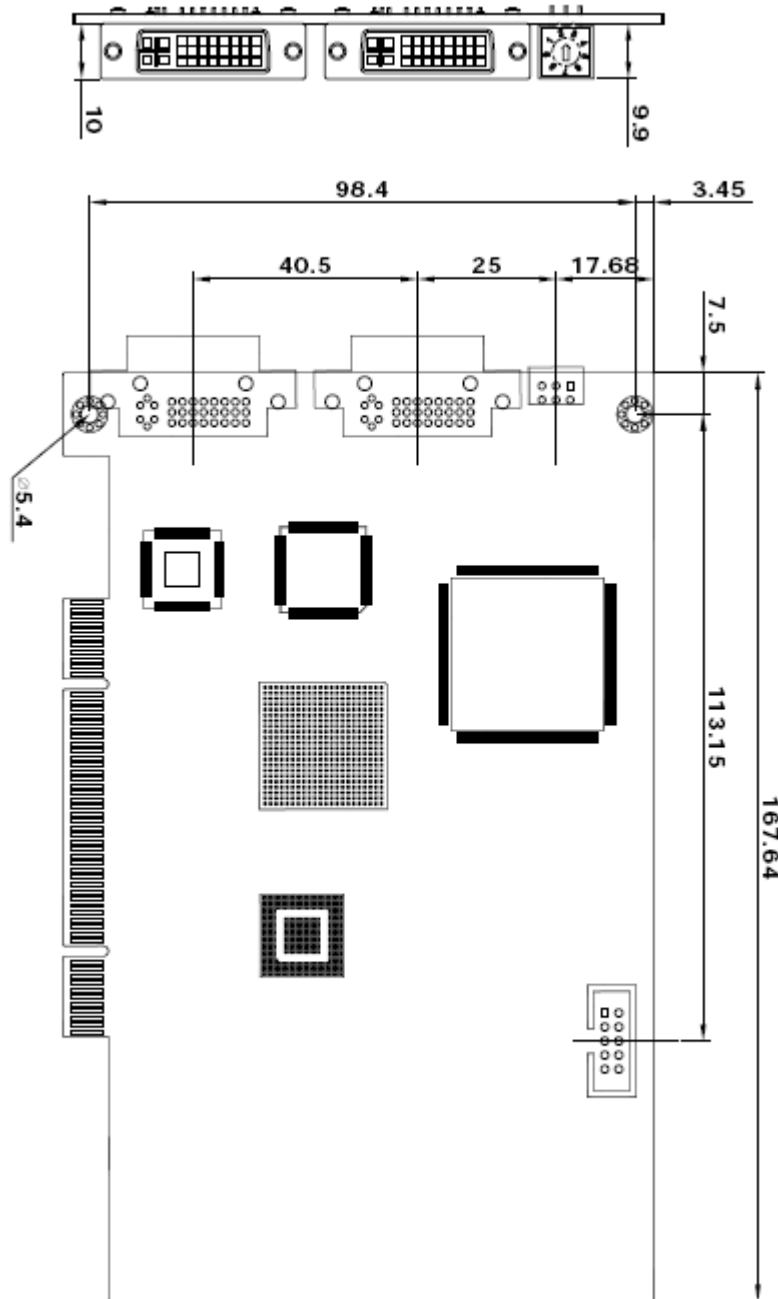
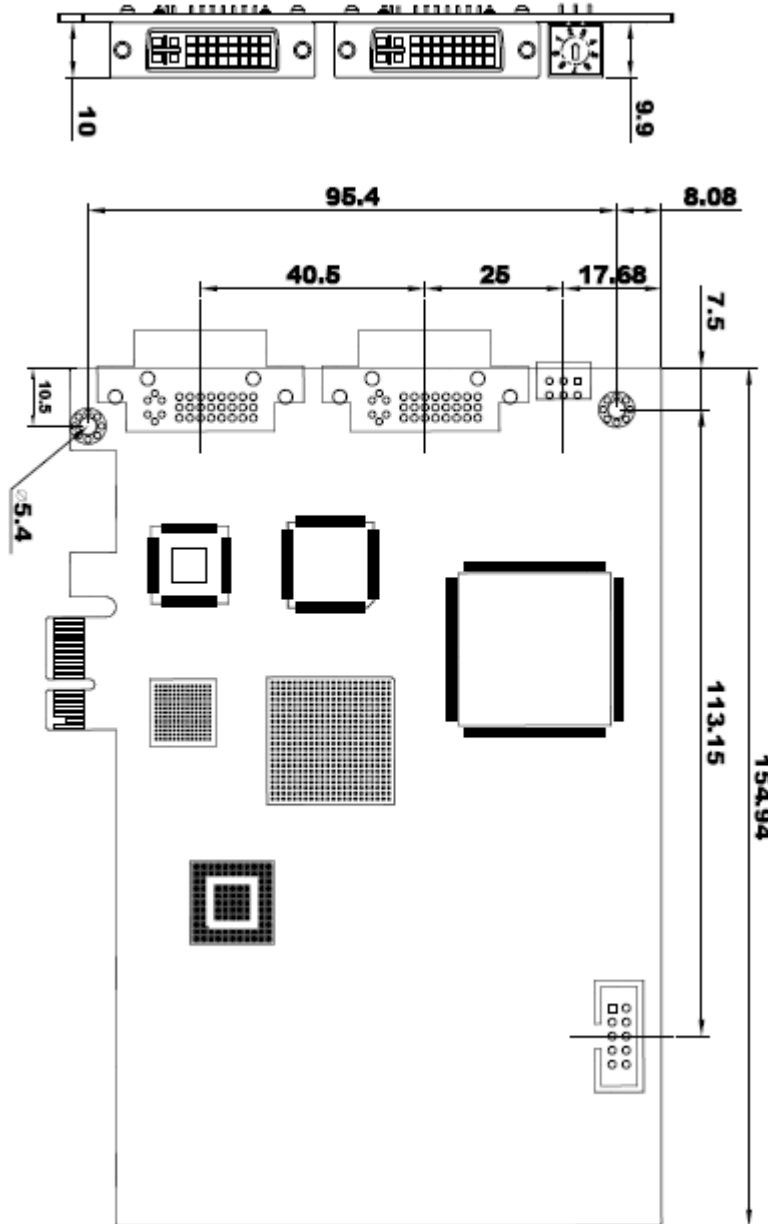


Figure 1-4: HDC-401 Dimensions (mm)

**1.6.2 HDC-401E Dimensions**



**Figure 1-5: HDC-401E Dimensions (mm)**

Chapter

2

# Hardware Installation

---



## 2.1 Unpacking

### 2.1.1 Anti-static Precautions



#### **WARNING:**

Failure to take ESD precautions during the installation of the video capture card may result in permanent damage to the capture card and severe injury to the user.

Electrostatic discharge (ESD) can cause serious damage to electronic components, including the video capture card. Dry climates are especially susceptible to ESD. It is therefore critical that whenever the video capture card, or any other electrical component is handled, the following anti-static precautions are strictly adhered to.

- **Wear an anti-static wristband:** - Wearing a simple anti-static wristband can help to prevent ESD from damaging the board.
- **Self-grounding:** - Before handling the board touch any grounded conducting material. During the time the board is handled, frequently touch any conducting materials that are connected to the ground.
- **Use an anti-static pad:** When configuring the video capture card, place it on an anti-static pad. This reduces the possibility of ESD damaging the video capture card.
- **Only handle the edges of the PCB:-** When handling the PCB, hold the PCB by the edges.

### 2.1.2 Unpacking Precautions

When the video capture card is unpacked, please do the following:

- Follow the anti-static precautions outlined in **Section 2.1.1**.
- Make sure the packing box is facing upwards so the video capture card does not fall out of the box.
- Make sure all the components listed in **Section 2.1.3** are present.

## HDC-4x Series Video Capture Card





### 2.1.3 Unpacking Checklist



**NOTE:**

If some of the components listed in the checklist below are missing, please do not proceed with the installation. Contact the IEI reseller or vendor you purchased the video capture card from or contact an IEI sales representative directly. To contact an IEI sales representative, please send an email to [sales@iei.com.tw](mailto:sales@iei.com.tw).

The video capture card is shipped with the following components:

Quantity	Item	Image
1	HDC-4x Series video capture card	
1	Utility CD	
1	Quick installation guide	
1	DVI to VGA adapter (optional)	

**Table 2-1: Package List Contents**

## 2.2 Hardware Installation Procedure

To install the video capture card hardware, the following steps must be followed:

**Step 1:** Install the video capture card.

**Step 2:** Install the DVI-I source equipment.

Once the steps above have been completed, the hardware installation procedures are complete.

## 2.3 Video Capture Card Installation

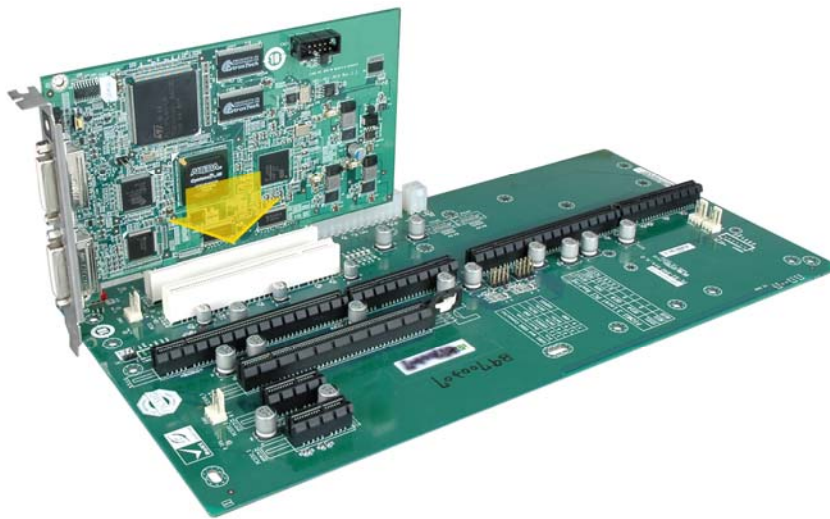
The HDC-4x Series video capture card has either a PCIe x1 or a PCI interface. To install the HDC-4x Series, please follow the steps below:

**Step 1:** Align the PCIe/PCI edge connector on the bottom of the video capture card with the PCIe x1 or PCI slot on the system motherboard.

**Step 2:** Gently insert the video capture card into the PCIe x1 or PCI slot.

**Step 3:** Push down gently on the video card to make sure it is firmly inserted into the PCIe x1 or PCI slot.

### HDC-401



## HDC-4x Series Video Capture Card

### HDC-401E



Figure 2-1: HDC-4x Series Installation

**Step 4:** Insert a retention screw through the top of the video capture card external bracket into the chassis to secure the card to the chassis.

## 2.4 DVI-I Devices Installation

Various DVI-I devices can be connected to the HDC-4x Series. Video input and video output are all supported. Follow the steps below to connect the DVI-I devices to the HDC-4x Series.

**Step 1:** Insert the DVI-I connector from the cable into the DVI-I input connector on the HDC-4x Series. Make sure the connection is secure.

**Step 2:** Insert the DVI-I connector of the other end of the cable into the DVI-I connector on the DVI-I device. Make sure the connection is secure.

**Step 3:** Use another DVI-I cable to connect the DVI-I connector of the DVI-I display device to the DVI-I output connector on the HDC-4x Series.

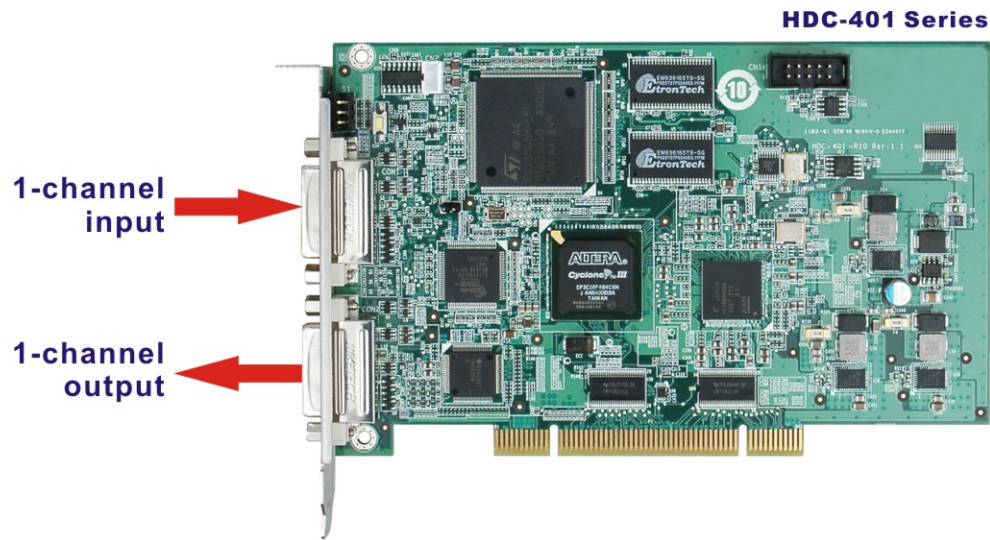


Figure 2-2: DVI-I Devices Connect to the Video Capture Card

## 2.5 Set the Rotary Switch Settings

The HDC-4x Series supports ten different display modes which are assigned by the rotary switch (0~9). See **Figure 2-3**.



Figure 2-3: Rotary Switch

The details of these ten modes are described in **Table 2-2**.

Mode	EDID	Display	Resolutions
0	Analog	Full screen	720p or 1080p
1	Analog	Dot-by-dot	720p or 1080p
2	Analog	Keep aspect ratio	720p or 1080p
3	Digital	Full screen	720p or 1080p
4	Digital	Dot-by-dot	720p or 1080p
5	Digital	Keep aspect ratio	720p or 1080p

## HDC-4x Series Video Capture Card

6	Analog	Full screen	720p
7	Digital	Full screen	720p
8	Analog	Full screen	1080p
9	Digital	Full screen	1080p

\*A~F modes are not available

**Table 2-2: HDC Video Capture Card Models**

The phrases used in the **Table 2-2** are explained below:

- **Mode:** the number on the rotary switch
- **EDID:** the video input signal. Analog (VGA EDID) or Digital (DVI EDID). The optional DVI to VGA adapter is needed for the VGA connection.
- **Display**
  - Full screen: scale up the original file to full-screen size
  - Dot-by-dot: display the exact resolutions of the original file.
  - Keep aspect ratio: scale up the original file, but keep the aspect ratio
- **Resolution**
  - 720p or 1080p: the resolution can be either 720p or 1080p resolution depending on the video input resolutions.
  - 720p: the resolution is 720p no matter what the input resolution is.
  - 1080p: the resolution is 1080p no matter what the input resolution is.



### NOTE:

To change the rotary switch setting, please turn off the system first.



Chapter

3

# Driver and Application Installation (Windows)

---

## HDC-4x Series Video Capture Card

### 3.1 Overview

A CD is shipped with the video capture card. The CD contains a driver for the video capture controllers on the card. When the video capture card is installed on the system, the driver must be installed. Failure to install the driver means that that video capture card cannot be detected by the system.



#### NOTE:

The Found New Hardware Wizard will automatically start when the system detects the video capture card (see the image below). Click **Cancel** to exit the wizard and follow the steps described in this chapter to install the driver and the HDCapture demo program.





## 3.2 Driver Installation

To install the HDC-4x Series driver, please follow the steps below: If the HDC-4x Series driver is already installed, please refer to **Section 3.2.1** to uninstall the driver first.



### NOTE:

If the **User Access Control** dialog box appears during installation, click **Yes** to continue.

**Step 1:** Make sure to log in the system as the administrator.

**Step 2:** Insert the driver CD.

**Step 3:** Locate the “Driverinstaller.bat” file in the driver CD. Double click it.

**Step 4:** A confirmation window appears. Click **Install**.

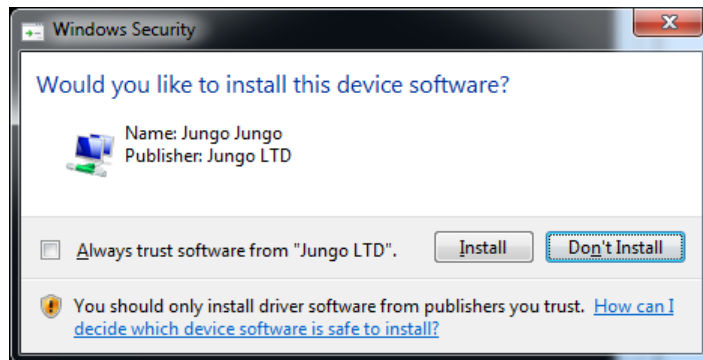
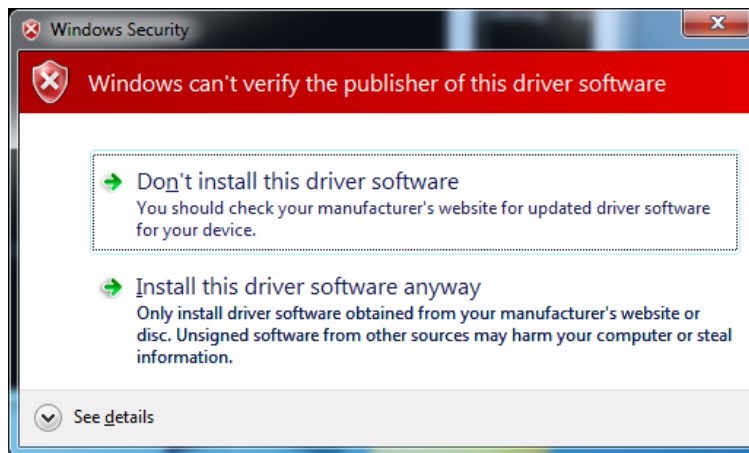


Figure 3-1: Windows Security

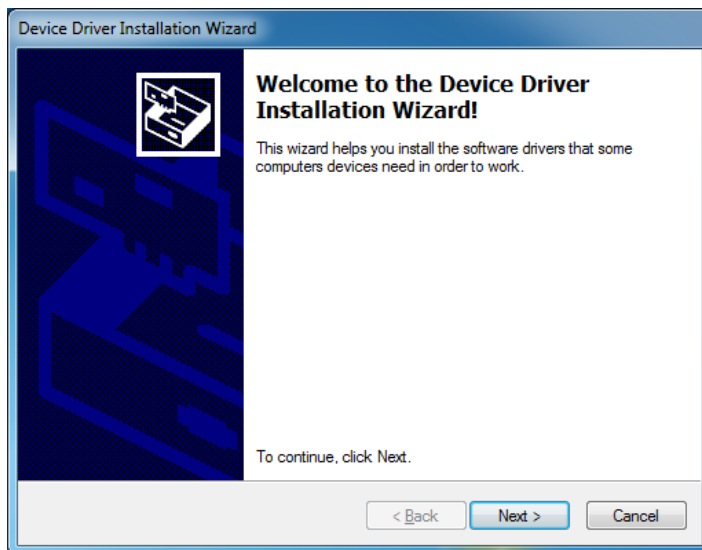
**Step 5:** If the following window appears, click **Install this driver software Anyway**.

## HDC-4x Series Video Capture Card



**Figure 3-2: Windows Warning Window**

**Step 6:** The Device Driver Installation Wizard appears. Click **Next** to start.



**Figure 3-3: Device Driver Installation Wizard**

**Step 7:** The driver starts to install and the screen in **Figure 3-4** appears.

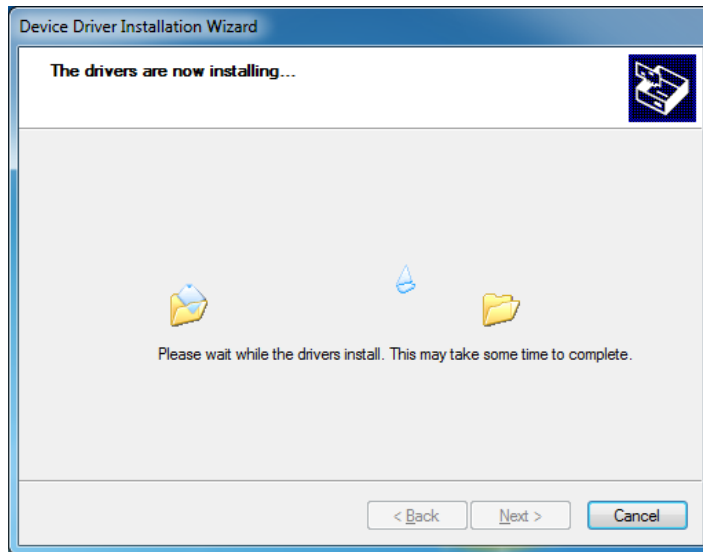


Figure 3-4: Driver Installing

**Step 8:** When the driver installation is complete, the screen in Figure 3-5 appears. Click the **Finish** button to finish driver installation.

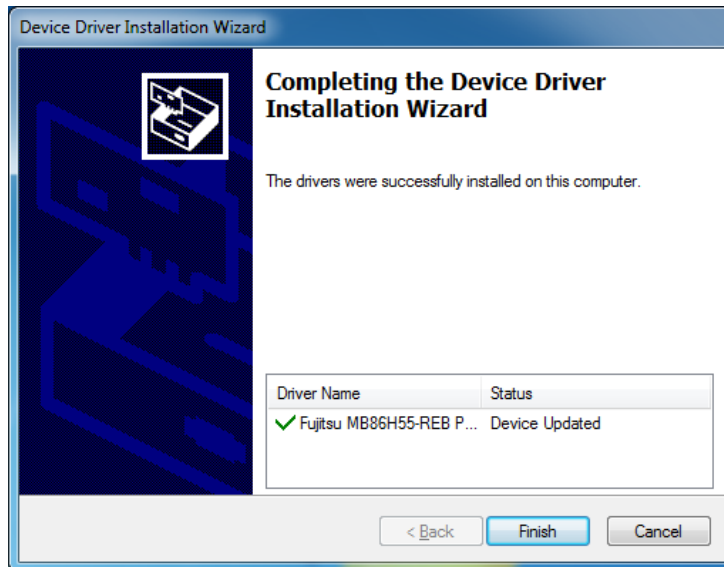


Figure 3-5: Driver Installation Complete

**Step 9:** Check the device manager in the Windows control panel to ensure the driver (MB86H55-REB PCI and WinDriver) has been properly installed (Figure 3-6).

## HDC-4x Series Video Capture Card

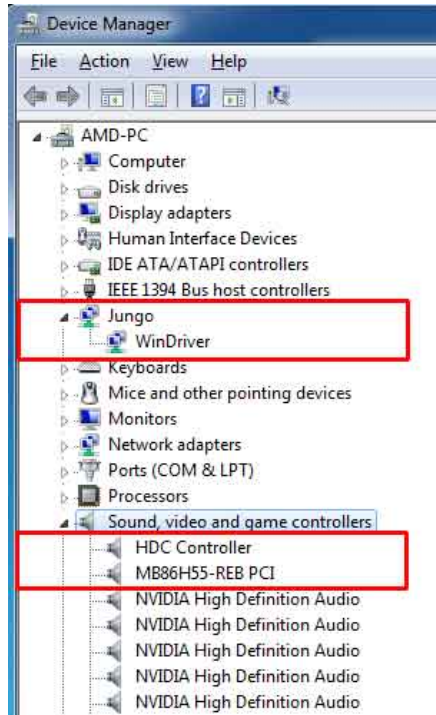


Figure 3-6: Device Manager

### 3.2.1 Uninstall Driver

To uninstall the driver, please follow the steps below.

- Step 1:** Make sure to login the system as the administrator.
- Step 2:** Locate the "Driveruninstaller.bat" file in the driver CD. Double click it to uninstall the driver.
- Step 3:** The console window pop-up and all drivers will be uninstalled.

## 3.3 Software Installation (Windows)

The HDC-4x Series comes with a video capture application – HDCapture. This section describes how to install the application in Windows environment.

### 3.3.1 System Requirements

The supported OS versions are listed below:

- Microsoft Windows XP SP2 32-bit

- Microsoft Windows 7 32-bit

After installing the driver, the following programs must be installed in order to use the HDCapture demo program:

- Microsoft .NET Framework 3.0/3.5/4.0
- Microsoft DirectX 9.0c
- Win7DSFilterTweaker tool (for Windows 7 OS only)
- Visual C++ 2005 & 2008 Redistributable

Please download the setup files of these programs from the official websites and install these programs in the system. For detailed setup procedures for some of the above programs, please refer to **Appendix A**.

### 3.3.2 HDCapture Demo Program Installation

To install the HDCapture demo program, please follow the steps below.



#### **NOTE:**

If the **User Access Control** dialog box appears during installation, click **Yes** to continue.

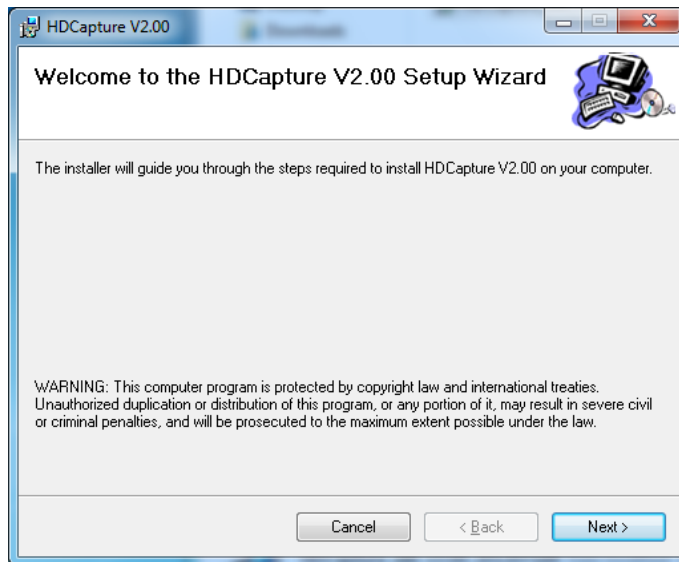
---

**Step 1:** Insert the driver CD.

**Step 2:** Locate the **HDCapture\_x86\_Vxxxx.msi** file in the driver CD. Double click the setup file to start the installation. The user can also download the latest setup file from IEI website.

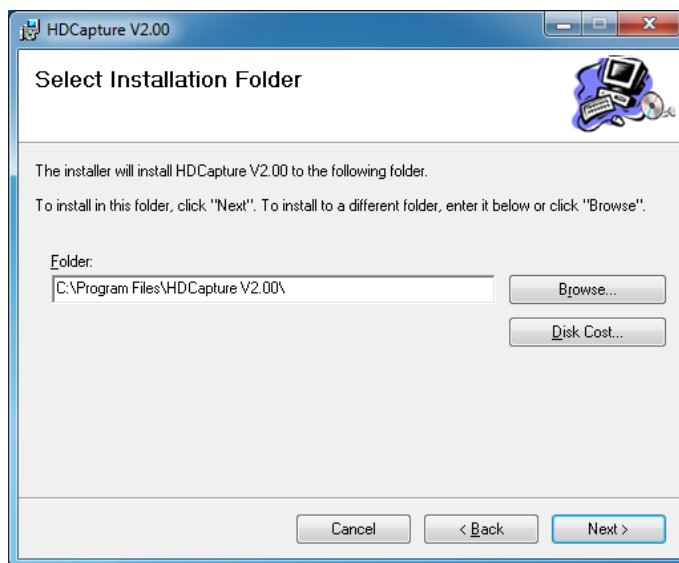
**Step 3:** The HDCapture Setup Wizard welcome window appears. Click **Next** to start.

## HDC-4x Series Video Capture Card



**Figure 3-7: HDCapture Setup Wizard**

**Step 4:** Select a folder for HDCapture installation in **Figure 3-8**. Click **Next** to continue.



**Figure 3-8: Select Installation Folder**

**Step 5:** The following screen appears. Click **Next** to confirm the installation.

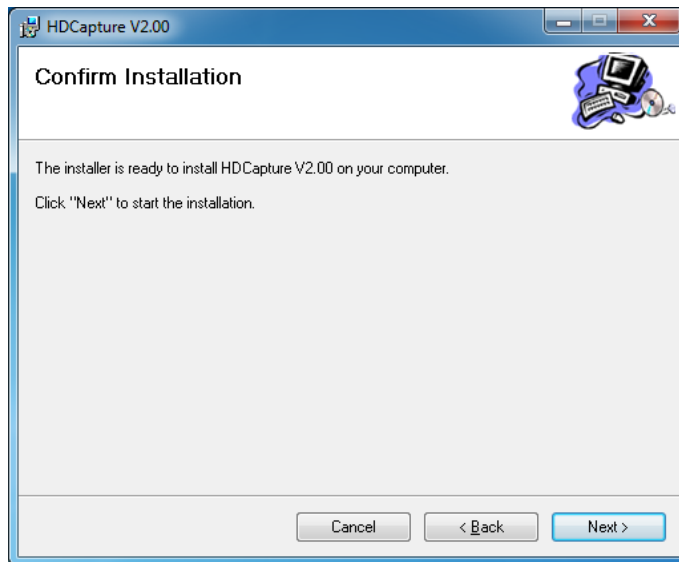


Figure 3-9: Confirm Installation

**Step 6:** The system starts installing the HDCapture.

**Step 7:** When the HDCapture is successfully installed, the following window appears.

Click **Close** to exit.

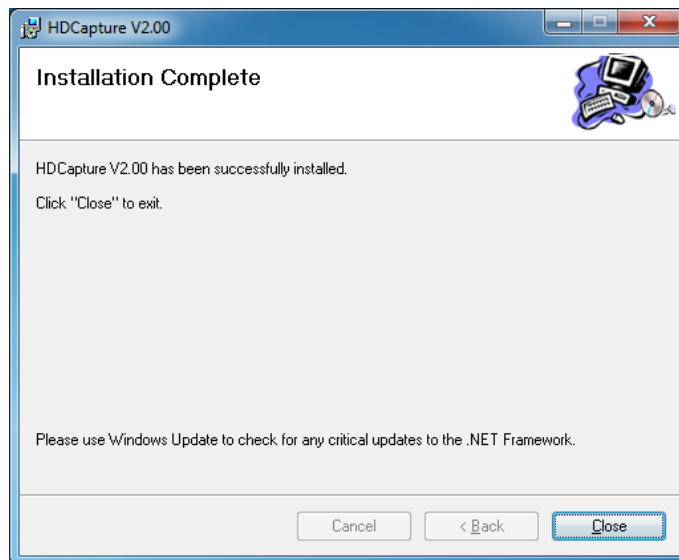


Figure 3-10: Installation Complete

Chapter

4

# HDCapture Application (Windows)

---



## 4.1 HDCapture Overview

The HDCapture application is a video capture tool that allows user to capture video through the DVI-I input port in Windows environment. The HDCapture application also includes decoding function that decodes the video signal for video output to the DVI-enabled display device.

## 4.2 Video Capture

To use the HDCapture to capture video, follow the steps below. If the older version of the HDCapture is already installed, please refer to **Section 4.5** to uninstall it.

**Step 1:** Launch the HDCapture. The Device Setting button (Device 0) is on the right side panel of the HDCapture (**Figure 4-1**). The best resolution to view HDCapture is 1280x1024 or above.

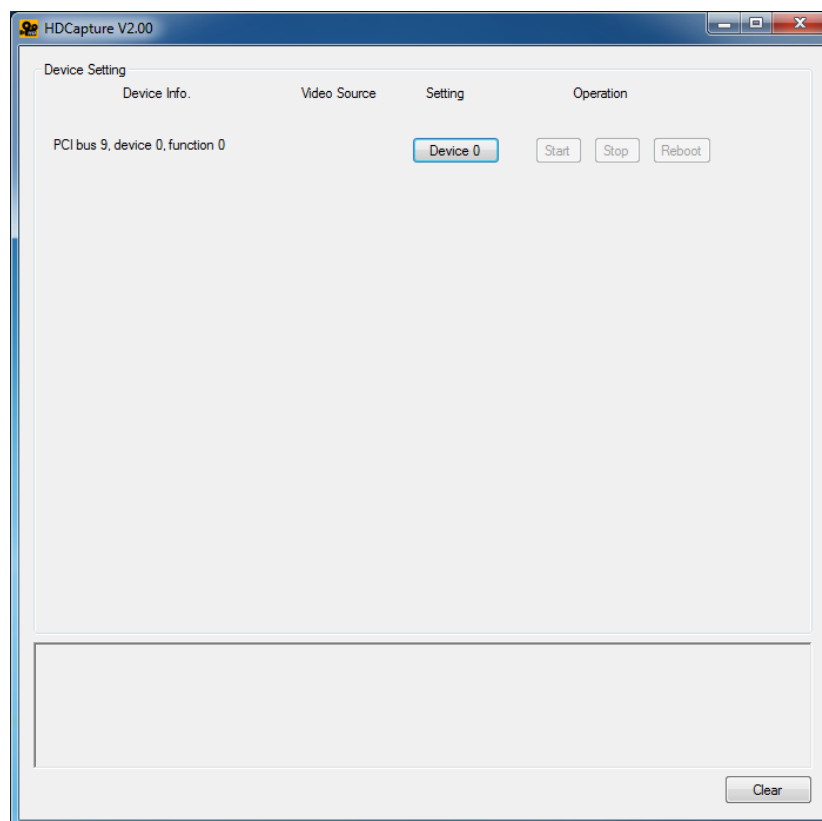


Figure 4-1: HDCapture

## HDC-4x Series Video Capture Card

**Step 2:** Enable and configure the device settings by clicking the **Device 0** button.

**Step 3:** The Encoding window appears (**Figure 4-2**). Choose the video input format.

There are multiple video format options, but **only two options are for the HDC-4x Series**. They are:

- **1920x1080 (60p)**      **(6000kps – 30000kps)**
- **1280x720 (60p)**      **(4000kps – 24000kps)**



### NOTE:

Which video format to choose depends on the video input resolution and the selected mode set by the HDC-4x Series rotary switch. If the selected mode supports **720p** resolution, select **1280x720 (60p)** despite of what the video input resolution is. If the selected mode supports **1080p** resolution, select **1920x1080 (60p)**.

If the selected mode supports **720p or 1080p** resolution, the decision is made by the video input resolution.

- Select **1280x720 (60p)** if **both** width and height numbers of the video input resolution are **less** than **1280 and 720**. For example: 800x600.
- Select **1920x1080 (60p)** if **either** width **or** height number of the video input resolution is **greater** than **1280 or 720**. For example: 1024x768.

To understand what resolutions the modes set by the rotary switch support, please refer to **Table 2-2**.

The user can also refer to **Appendix B** for tables of the supported input resolution and the corresponding video format to select.

**Step 4:** Configure the encoding settings (**Figure 4-2**), including encoding file directory (click Ref button to choose the directory), rate control (CBR or VBR) and video encoding bitrate (must be in the range of video format). When “CBR” is selected, the “Bitrate” text box is displayed. When “VBR” is selected, the “Average bitrate”

and “Peak bitrate” text boxes are displayed. Close the window to save the settings.

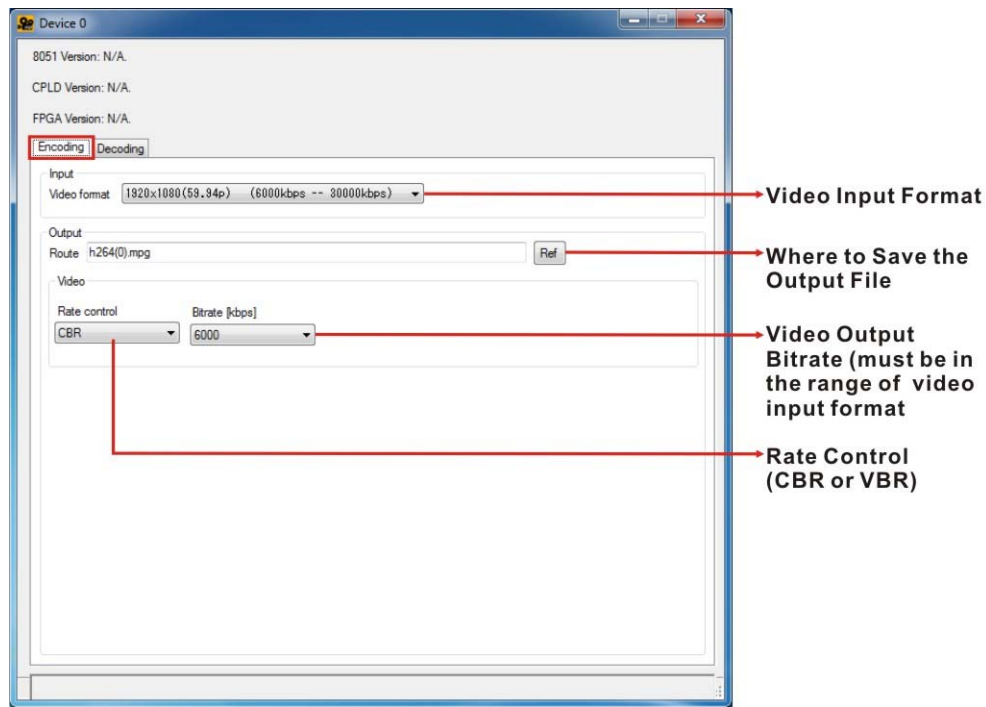


Figure 4-2: Encoding Settings

**Step 5:** Click Start  to start capture the video. Click Stop  to stop capture.

Click  to reboot the device without turning off the system.

## HDC-4x Series Video Capture Card

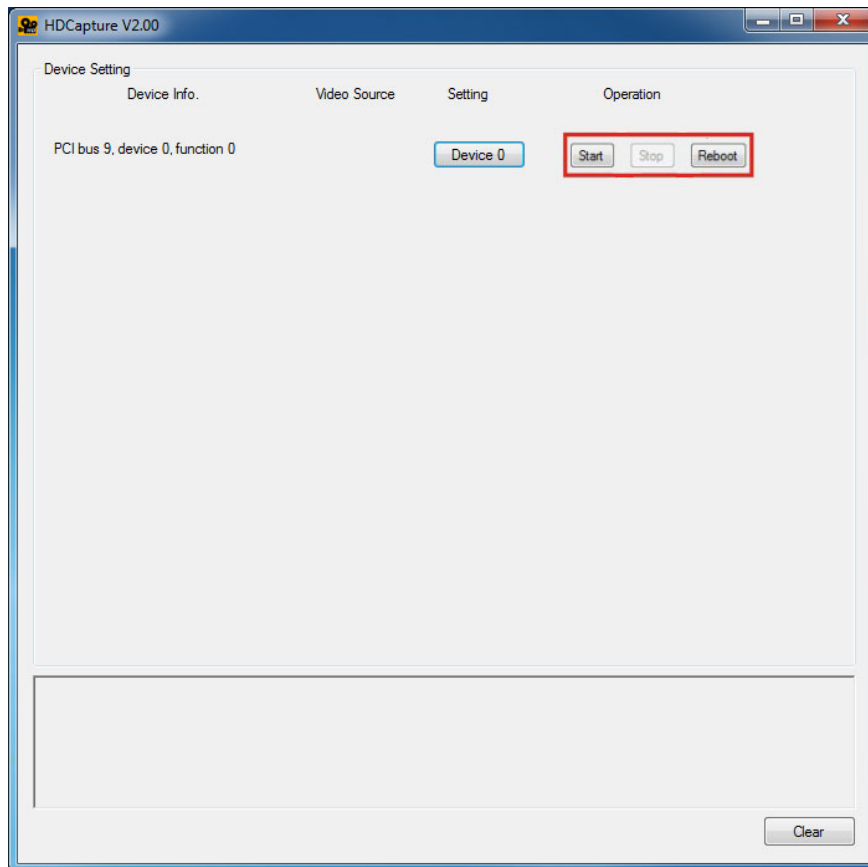


Figure 4-3: Video Capture Control



### NOTE:

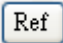
If some error messages show under the display screen, click the **Clear** button to clear the error messages.

## 4.3 Video Decoding

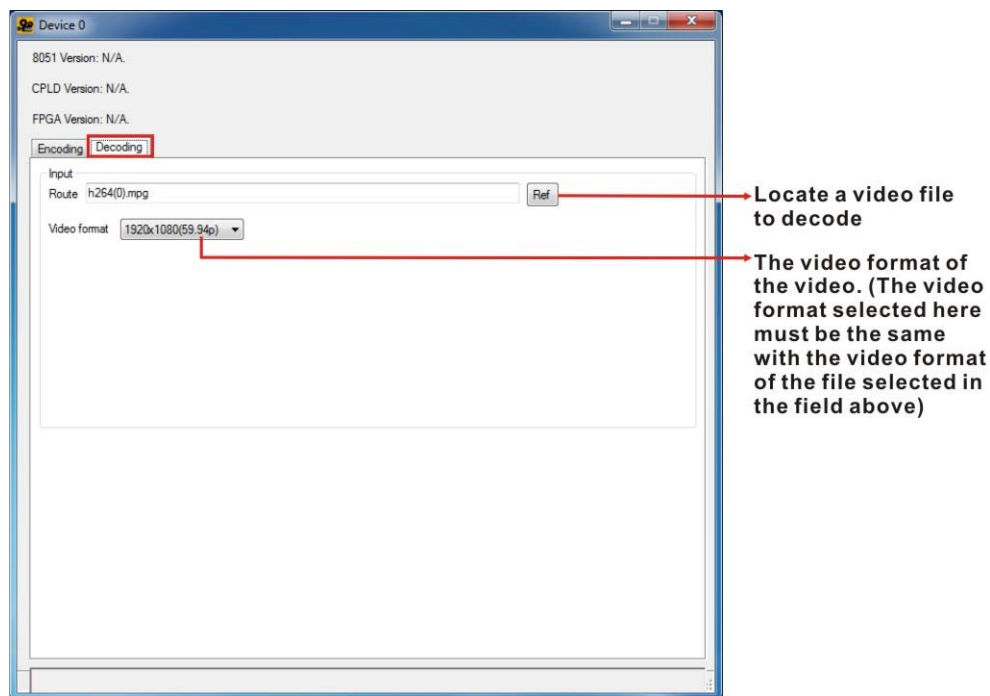
The HDCapture also includes decoding function that decodes the video signal for video output to the DVI-enabled display device. To decode a captured video clip, follow the steps below.

**Step 1:** Launch the HDCapture.

**Step 2:** Bring up the Decoding page by clicking one of the **Device 0** button. Click the Decoding tab to access the decoding page.

**Step 3:** Click Ref button  to locate a video file in the computer to decode.

**Step 4:** Select the video format of the selected video clip. The video format selected here must be the same with the video format of the file selected in the previous step.



**Figure 4-4: Decoding Settings**

**Step 5:** Close the window to save the settings.

**Step 6:** Click Operation Start  to start decoding the selected video.

## HDC-4x Series Video Capture Card

### 4.4 Video Bypass

To view the video input source on DVI display device in real time, please follow the steps below.

- Step 1:** Launch the HDCapture.
- Step 2:** Connect the DVI cable from DVI display device to the DVI-I output port of the HDC-4x Series.
- Step 3:** Connect the video input source to the DVI-I input port of the HDC-4x Series.
- Step 4:** A blue screen shows on the DVI display device before displaying the video.

### 4.5 Uninstall HDCapture

To uninstall the HDCapture, follow the steps below.

- Step 1:** Select **Control Panel** → **Programs** → **Programs and Features**.
- Step 2:** Select HDCapture and click the **Uninstall** button.

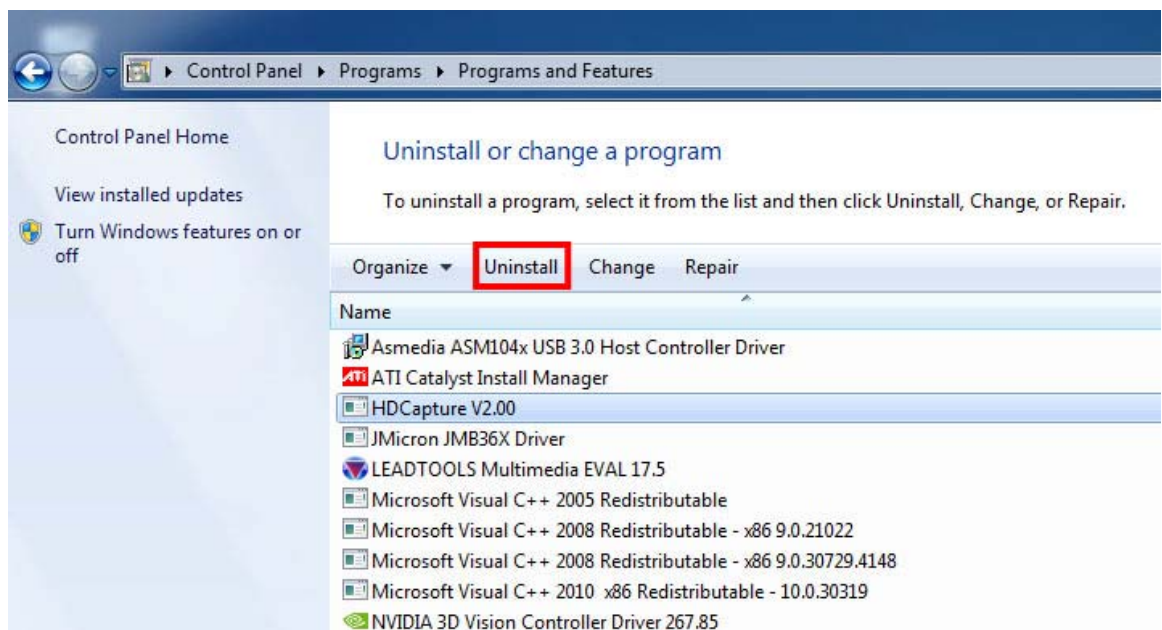
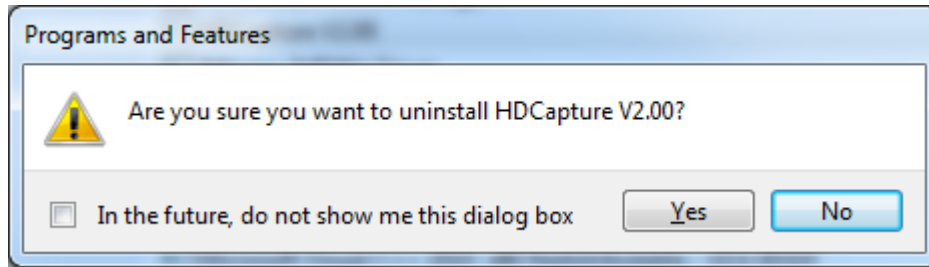


Figure 4-5: Uninstall HDCapture

**Step 3:** A confirmation window appears. Click **Yes** to uninstall the HDCapture.



**Figure 4-6: Uninstall HDCapture Confirmation Window**

## 4.6 FAQ

**Q:** How to know the current DirectX version used on the system?

**A:** In Windows, click Start → Run → Type 'dxdiag' → Enter. Then you can find the current version in DirectX Diagnostic Tool window.

**Q:** How to obtain the latest driver?

**A:** Please go to <http://www.ieiworld.com/>. You can always find and download the latest driver from "Support" pages.

**Q:** The monitor screen is shifted when connecting the HDC-4x Series to the monitor via VGA output.

**A:** Press the AUTO button on the monitor to adjust.

Appendix

A

# Input Resolution and Video Format

---





## HDC-4x Series Video Capture Card

### A.1 Supported Input Resolution and Video Format

The following tables list the input resolution supported by the HDC-4x Series and the corresponding video format to choose in the HDCapture application.

#### A.1.1 VGA Input, SW=0

Rotary Switch	Encode				Decode	
	Input Resolution (VGA)	HDCapture Application Selection (Encode)	Capture (Record) File Resolution	Output Display (Bypass Output)	HDCapture Application Selection (Decode)	Output Display (Decode Output)
0	640x350 85Hz	1280x720 60p	1280x720 60p	Full screen	1280x720 60p	Full screen
0	640x400 85Hz	1280x720 60p	1280x720 60p	Full screen	1280x720 60p	Full screen
0	720x400 85Hz	1280x720 60p	1280x720 60p	Full screen	1280x720 60p	Full screen
0	640x480 60Hz	1280x720 60p	1280x720 60p	Full screen	1280x720 60p	Full screen
0	640x480 72Hz	1280x720 60p	1280x720 60p	Full screen	1280x720 60p	Full screen
0	640x480 75Hz	1280x720 60p	1280x720 60p	Full screen	1280x720 60p	Full screen
0	640x480 85Hz	1280x720 60p	1280x720 60p	Full screen	1280x720 60p	Full screen
0	800x600 56Hz	1280x720 60p	1280x720 60p	Full screen	1280x720 60p	Full screen
0	800x600 60Hz	1280x720 60p	1280x720 60p	Full screen	1280x720 60p	Full screen
0	800x600 72Hz	1280x720 60p	1280x720 60p	Full screen	1280x720 60p	Full screen
0	800x600 75Hz	1280x720 60p	1280x720 60p	Full screen	1280x720 60p	Full screen
0	800x600 85Hz	1280x720 60p	1280x720 60p	Full screen	1280x720 60p	Full screen
0	848x480 60Hz	1280x720 60p	1280x720 60p	Full screen	1280x720 60p	Full screen
0	1024x768 60Hz	1920x1080 60p	1920x1080 60p	Full screen	1920x1080 60p	Full screen

0	1024x768 70Hz	1920x1080 60p	1920x1080 60p	Full screen	1920x1080 60p	Full screen
0	1024x768 75Hz	1920x1080 60p	1920x1080 60p	Full screen	1920x1080 60p	Full screen
0	1024x768 85Hz	1920x1080 60p	1920x1080 60p	Full screen	1920x1080 60p	Full screen
0	1152x864 75Hz	1920x1080 60p	1920x1080 60p	Full screen	1920x1080 60p	Full screen
0	1280x720 50Hz (720P)	1280x720 60p	1280x720 60p	Full screen	1280x720 60p	Full screen
0	1280x720 60Hz (720P)	1280x720 60p	1280x720 60p	Full screen	1280x720 60p	Full screen
0	1280x768 60Hz	1920x1080 60p	1920x1080 60p	Full screen	1920x1080 60p	Full screen
0	1280x768 75Hz	1920x1080 60p	1920x1080 60p	Full screen	1920x1080 60p	Full screen
0	1280x768 80Hz	1920x1080 60p	1920x1080 60p	Full screen	1920x1080 60p	Full screen
0	1280x800 60Hz	1920x1080 60p	1920x1080 60p	Full screen	1920x1080 60p	Full screen
0	1280x960 60Hz	1920x1080 60p	1920x1080 60p	Full screen	1920x1080 60p	Full screen
0	1280x960 85Hz	1920x1080 60p	1920x1080 60p	Full screen	1920x1080 60p	Full screen
0	1280x1024 60Hz	1920x1080 60p	1920x1080 60p	Full screen	1920x1080 60p	Full screen
0	1280x1024 75Hz	1920x1080 60p	1920x1080 60p	Full screen	1920x1080 60p	Full screen
0	1360x768 60Hz	1920x1080 60p	1920x1080 60p	Full screen	1920x1080 60p	Full screen
0	1400x1050 60Hz	1920x1080 60p	1920x1080 60p	Full screen	1920x1080 60p	Full screen
0	1400x1050 75Hz	1920x1080 60p	1920x1080 60p	Full screen	1920x1080 60p	Full screen
0	1440x900 60Hz	1920x1080 60p	1920x1080 60p	Full screen	1920x1080 60p	Full screen
0	1440x900 75Hz	1920x1080 60p	1920x1080 60p	Full screen	1920x1080 60p	Full screen
0	1600x1200 60Hz	1920x1080 60p	1920x1080 60p	Full screen	1920x1080 60p	Full screen
0	1680x1050 60Hz	1920x1080 60p	1920x1080 60p	Full screen	1920x1080 60p	Full screen
0	1920x1080 50Hz (1080P)	1920x1080 60p	1920x1080 60p	Full screen	1920x1080 60p	Full screen
0	1920x1080 60Hz (1080P)	1920x1080 60p	1920x1080 60p	Full screen	1920x1080 60p	Full screen



## HDC-4x Series Video Capture Card

### A.1.2 VGA Input, SW=1

Rotary Switch	Encode				Decode	
	Input Resolution (VGA)	HDCapture Application Selection (Encode)	Capture (Record) File Resolution	Output Display (Bypass Output)	HDCapture Application Selection (Decode)	Output Display (Decode Output)
1	640x350 85Hz	1280x720 60p	1280x720 60p	Dot by dot	1280x720 60p	Dot by dot
1	640x400 85Hz	1280x720 60p	1280x720 60p	Dot by dot	1280x720 60p	Dot by dot
1	720x400 85Hz	1280x720 60p	1280x720 60p	Dot by dot	1280x720 60p	Dot by dot
1	640x480 60Hz	1280x720 60p	1280x720 60p	Dot by dot	1280x720 60p	Dot by dot
1	640x480 72Hz	1280x720 60p	1280x720 60p	Dot by dot	1280x720 60p	Dot by dot
1	640x480 75Hz	1280x720 60p	1280x720 60p	Dot by dot	1280x720 60p	Dot by dot
1	640x480 85Hz	1280x720 60p	1280x720 60p	Dot by dot	1280x720 60p	Dot by dot
1	800x600 56Hz	1280x720 60p	1280x720 60p	Dot by dot	1280x720 60p	Dot by dot
1	800x600 60Hz	1280x720 60p	1280x720 60p	Dot by dot	1280x720 60p	Dot by dot
1	800x600 72Hz	1280x720 60p	1280x720 60p	Dot by dot	1280x720 60p	Dot by dot
1	800x600 75Hz	1280x720 60p	1280x720 60p	Dot by dot	1280x720 60p	Dot by dot
1	800x600 85Hz	1280x720 60p	1280x720 60p	Dot by dot	1280x720 60p	Dot by dot
1	848x480 60Hz	1280x720 60p	1280x720 60p	Dot by dot	1280x720 60p	Dot by dot
1	1024x768 60Hz	1920x1080 60p	1920x1080 60p	Dot by dot	1920x1080 60p	Dot by dot
1	1024x768 70Hz	1920x1080 60p	1920x1080 60p	Dot by dot	1920x1080 60p	Dot by dot
1	1024x768 75Hz	1920x1080 60p	1920x1080 60p	Dot by dot	1920x1080 60p	Dot by dot
1	1024x768 85Hz	1920x1080 60p	1920x1080 60p	Dot by dot	1920x1080 60p	Dot by dot
1	1152x864 75Hz	1920x1080 60p	1920x1080 60p	Dot by dot	1920x1080 60p	Dot by dot

1	1280x720 50Hz (720P)	1280x720 60p	1280x720 60p	Full screen	1280x720 60p	Full screen
1	1280x720 60Hz (720P)	1280x720 60p	1280x720 60p	Full screen	1280x720 60p	Full screen
1	1280x768 60Hz	1920x1080 60p	1920x1080 60p	Dot by dot	1920x1080 60p	Dot by dot
1	1280x768 75Hz	1920x1080 60p	1920x1080 60p	Dot by dot	1920x1080 60p	Dot by dot
1	1280x768 80Hz	1920x1080 60p	1920x1080 60p	Dot by dot	1920x1080 60p	Dot by dot
1	1280x800 60hz	1920x1080 60p	1920x1080 60p	Dot by dot	1920x1080 60p	Dot by dot
1	1280x960 60Hz	1920x1080 60p	1920x1080 60p	Dot by dot	1920x1080 60p	Dot by dot
1	1280x960 85Hz	1920x1080 60p	1920x1080 60p	Dot by dot	1920x1080 60p	Dot by dot
1	1280x1024 60Hz	1920x1080 60p	1920x1080 60p	Dot by dot	1920x1080 60p	Dot by dot
1	1280x1024 75Hz	1920x1080 60p	1920x1080 60p	Dot by dot	1920x1080 60p	Dot by dot
1	1360x768 60Hz	1920x1080 60p	1920x1080 60p	Dot by dot	1920x1080 60p	Dot by dot
1	1400x1050 60Hz	1920x1080 60p	1920x1080 60p	Dot by dot	1920x1080 60p	Dot by dot
1	1400x1050 75Hz	1920x1080 60p	1920x1080 60p	Dot by dot	1920x1080 60p	Dot by dot
1	1440x900 60Hz	1920x1080 60p	1920x1080 60p	Dot by dot	1920x1080 60p	Dot by dot
1	1440x900 75Hz	1920x1080 60p	1920x1080 60p	Dot by dot	1920x1080 60p	Dot by dot
1	1600x1200 60Hz	1920x1080 60p	1920x1080 60p	Dot by dot	1920x1080 60p	Dot by dot
1	1680x1050 60Hz	1920x1080 60p	1920x1080 60p	Dot by dot	1920x1080 60p	Dot by dot
1	1920x1080 50Hz (1080P)	1920x1080 60p	1920x1080 60p	Full screen	1920x1080 60p	Full screen
1	1920x1080 60Hz (1080P)	1920x1080 60p	1920x1080 60p	Full screen	1920x1080 60p	Full screen

## HDC-4x Series Video Capture Card

### A.1.3 VGA Input, SW=2

Rotary Switch	Encode				Decode	
	Input Resolution (VGA)	HDCapture Application Selection (Encode)	Capture (Record) File Resolution	Output Display (Bypass Output)	HDCapture Application Selection (Decode)	Output Display (Decode Output)
2	640x350 85Hz	1280x720 60p	1280x720 60p	Keep aspect	1280x720 60p	Keep aspect
2	640x400 85Hz	1280x720 60p	1280x720 60p	Keep aspect	1280x720 60p	Keep aspect
2	720x400 85Hz	1280x720 60p	1280x720 60p	Keep aspect	1280x720 60p	Keep aspect
2	640x480 60Hz	1280x720 60p	1280x720 60p	Keep aspect	1280x720 60p	Keep aspect
2	640x480 72Hz	1280x720 60p	1280x720 60p	Keep aspect	1280x720 60p	Keep aspect
2	640x480 75Hz	1280x720 60p	1280x720 60p	Keep aspect	1280x720 60p	Keep aspect
2	640x480 85Hz	1280x720 60p	1280x720 60p	Keep aspect	1280x720 60p	Keep aspect
2	800x600 56Hz	1280x720 60p	1280x720 60p	Keep aspect	1280x720 60p	Keep aspect
2	800x600 60Hz	1280x720 60p	1280x720 60p	Keep aspect	1280x720 60p	Keep aspect
2	800x600 72Hz	1280x720 60p	1280x720 60p	Keep aspect	1280x720 60p	Keep aspect
2	800x600 75Hz	1280x720 60p	1280x720 60p	Keep aspect	1280x720 60p	Keep aspect
2	800x600 85Hz	1280x720 60p	1280x720 60p	Keep aspect	1280x720 60p	Keep aspect
2	848x480 60Hz	1280x720 60p	1280x720 60p	Keep aspect	1280x720 60p	Keep aspect
2	1024x768 60Hz	1920x1080 60p	1920x1080 60p	Keep aspect	1920x1080 60p	Keep aspect
2	1024x768 70Hz	1920x1080 60p	1920x1080 60p	Keep aspect	1920x1080 60p	Keep aspect
2	1024x768 75Hz	1920x1080 60p	1920x1080 60p	Keep aspect	1920x1080 60p	Keep aspect
2	1024x768 85Hz	1920x1080 60p	1920x1080 60p	Keep aspect	1920x1080 60p	Keep aspect
2	1152x864 75Hz	1920x1080 60p	1920x1080 60p	Keep aspect	1920x1080 60p	Keep aspect

2	1280x720 50Hz (720P)	1280x720 60p	1280x720 60p	Full screen	1280x720 60p	Full screen
2	1280x720 60Hz (720P)	1280x720 60p	1280x720 60p	Full screen	1280x720 60p	Full screen
2	1280x768 60Hz	1920x1080 60p	1920x1080 60p	Keep aspect	1920x1080 60p	Keep aspect
2	1280x768 75Hz	1920x1080 60p	1920x1080 60p	Keep aspect	1920x1080 60p	Keep aspect
2	1280x768 80Hz	1920x1080 60p	1920x1080 60p	Keep aspect	1920x1080 60p	Keep aspect
2	1280x800 60Hz	1920x1080 60p	1920x1080 60p	Keep aspect	1920x1080 60p	Keep aspect
2	1280x960 60Hz	1920x1080 60p	1920x1080 60p	Keep aspect	1920x1080 60p	Keep aspect
2	1280x960 85Hz	1920x1080 60p	1920x1080 60p	Keep aspect	1920x1080 60p	Keep aspect
2	1280x1024 60Hz	1920x1080 60p	1920x1080 60p	Keep aspect	1920x1080 60p	Keep aspect
2	1280x1024 75Hz	1920x1080 60p	1920x1080 60p	Keep aspect	1920x1080 60p	Keep aspect
2	1360x768 60Hz	1920x1080 60p	1920x1080 60p	Keep aspect	1920x1080 60p	Keep aspect
2	1400x1050 60Hz	1920x1080 60p	1920x1080 60p	Keep aspect	1920x1080 60p	Keep aspect
2	1400x1050 75Hz	1920x1080 60p	1920x1080 60p	Keep aspect	1920x1080 60p	Keep aspect
2	1440x900 60Hz	1920x1080 60p	1920x1080 60p	Keep aspect	1920x1080 60p	Keep aspect
2	1440x900 75Hz	1920x1080 60p	1920x1080 60p	Keep aspect	1920x1080 60p	Keep aspect
2	1600x1200 60Hz	1920x1080 60p	1920x1080 60p	Keep aspect	1920x1080 60p	Keep aspect
2	1680x1050 60Hz	1920x1080 60p	1920x1080 60p	Keep aspect	1920x1080 60p	Keep aspect
2	1920x1080 50Hz (1080P)	1920x1080 60p	1920x1080 60p	Full screen	1920x1080 60p	Full screen
2	1920x1080 60Hz (1080P)	1920x1080 60p	1920x1080 60p	Full screen	1920x1080 60p	Full screen

## HDC-4x Series Video Capture Card

### A.1.4 DVI Input, SW=3

Rotary Switch	Encode				Decode	
	Input Resolution (VGA)	HDCapture Application Selection (Encode)	Capture (Record) File Resolution	Output Display (Bypass Output)	HDCapture Application Selection (Decode)	Output Display (Decode Output)
3	640x350 85Hz	1280x720 60p	1280x720 60p	Full screen	1280x720 60p	Full screen
3	640x400 85Hz	1280x720 60p	1280x720 60p	Full screen	1280x720 60p	Full screen
3	720x400 85Hz	1280x720 60p	1280x720 60p	Full screen	1280x720 60p	Full screen
3	640x480 60Hz	1280x720 60p	1280x720 60p	Full screen	1280x720 60p	Full screen
3	640x480 72Hz	1280x720 60p	1280x720 60p	Full screen	1280x720 60p	Full screen
3	640x480 75Hz	1280x720 60p	1280x720 60p	Full screen	1280x720 60p	Full screen
3	640x480 85Hz	1280x720 60p	1280x720 60p	Full screen	1280x720 60p	Full screen
3	800x600 56Hz	1280x720 60p	1280x720 60p	Full screen	1280x720 60p	Full screen
3	800x600 60Hz	1280x720 60p	1280x720 60p	Full screen	1280x720 60p	Full screen
3	800x600 72Hz	1280x720 60p	1280x720 60p	Full screen	1280x720 60p	Full screen
3	800x600 75Hz	1280x720 60p	1280x720 60p	Full screen	1280x720 60p	Full screen
3	800x600 85Hz	1280x720 60p	1280x720 60p	Full screen	1280x720 60p	Full screen
3	848x480 60Hz	1280x720 60p	1280x720 60p	Full screen	1280x720 60p	Full screen
3	1024x768 60Hz	1920x1080 60p	1920x1080 60p	Full screen	1920x1080 60p	Full screen
3	1024x768 70Hz	1920x1080 60p	1920x1080 60p	Full screen	1920x1080 60p	Full screen
3	1024x768 75Hz	1920x1080 60p	1920x1080 60p	Full screen	1920x1080 60p	Full screen
3	1024x768 85Hz	1920x1080 60p	1920x1080 60p	Full screen	1920x1080 60p	Full screen
3	1152x864 75Hz	1920x1080 60p	1920x1080 60p	Full screen	1920x1080 60p	Full screen



3	1280x720 50Hz (720P)	1280x720 60p	1280x720 60p	Full screen	1280x720 60p	Full screen
3	1280x720 60Hz (720P)	1280x720 60p	1280x720 60p	Full screen	1280x720 60p	Full screen
3	1280x768 60Hz	1920x1080 60p	1920x1080 60p	Full screen	1920x1080 60p	Full screen
3	1280x768 75Hz	1920x1080 60p	1920x1080 60p	Full screen	1920x1080 60p	Full screen
3	1280x768 80Hz	1920x1080 60p	1920x1080 60p	Full screen	1920x1080 60p	Full screen
3	1280x800 60hz	1920x1080 60p	1920x1080 60p	Full screen	1920x1080 60p	Full screen
3	1280x960 60Hz	1920x1080 60p	1920x1080 60p	Full screen	1920x1080 60p	Full screen
3	1280x960 85Hz	1920x1080 60p	1920x1080 60p	Full screen	1920x1080 60p	Full screen
3	1280x1024 60Hz	1920x1080 60p	1920x1080 60p	Full screen	1920x1080 60p	Full screen
3	1280x1024 75Hz	1920x1080 60p	1920x1080 60p	Full screen	1920x1080 60p	Full screen
3	1360x768 60Hz	1920x1080 60p	1920x1080 60p	Full screen	1920x1080 60p	Full screen
3	1400x1050 60Hz	1920x1080 60p	1920x1080 60p	Full screen	1920x1080 60p	Full screen
3	1400x1050 75Hz	1920x1080 60p	1920x1080 60p	Full screen	1920x1080 60p	Full screen
3	1440x900 60Hz	1920x1080 60p	1920x1080 60p	Full screen	1920x1080 60p	Full screen
3	1440x900 75Hz	1920x1080 60p	1920x1080 60p	Full screen	1920x1080 60p	Full screen
3	1600x1200 60Hz	1920x1080 60p	1920x1080 60p	Full screen	1920x1080 60p	Full screen
3	1680x1050 60Hz	1920x1080 60p	1920x1080 60p	Full screen	1920x1080 60p	Full screen
3	1920x1080 50Hz (1080P)	1920x1080 60p	1920x1080 60p	Full screen	1920x1080 60p	Full screen
3	1920x1080 60Hz (1080P)	1920x1080 60p	1920x1080 60p	Full screen	1920x1080 60p	Full screen

## HDC-4x Series Video Capture Card

### A.1.5 DVI Input, SW=4

Rotary Switch	Encode				Decode	
	Input Resolution (VGA)	HDCapture Application Selection (Encode)	Capture (Record) File Resolution	Output Display (Bypass Output)	HDCapture Application Selection (Decode)	Output Display (Decode Output)
4	640x350 85Hz	1280x720 60p	1280x720 60p	Dot by dot	1280x720 60p	Dot by dot
4	640x400 85Hz	1280x720 60p	1280x720 60p	Dot by dot	1280x720 60p	Dot by dot
4	720x400 85Hz	1280x720 60p	1280x720 60p	Dot by dot	1280x720 60p	Dot by dot
4	640x480 60Hz	1280x720 60p	1280x720 60p	Dot by dot	1280x720 60p	Dot by dot
4	640x480 72Hz	1280x720 60p	1280x720 60p	Dot by dot	1280x720 60p	Dot by dot
4	640x480 75Hz	1280x720 60p	1280x720 60p	Dot by dot	1280x720 60p	Dot by dot
4	640x480 85Hz	1280x720 60p	1280x720 60p	Dot by dot	1280x720 60p	Dot by dot
4	800x600 56Hz	1280x720 60p	1280x720 60p	Dot by dot	1280x720 60p	Dot by dot
4	800x600 60Hz	1280x720 60p	1280x720 60p	Dot by dot	1280x720 60p	Dot by dot
4	800x600 72Hz	1280x720 60p	1280x720 60p	Dot by dot	1280x720 60p	Dot by dot
4	800x600 75Hz	1280x720 60p	1280x720 60p	Dot by dot	1280x720 60p	Dot by dot
4	800x600 85Hz	1280x720 60p	1280x720 60p	Dot by dot	1280x720 60p	Dot by dot
4	848x480 60Hz	1280x720 60p	1280x720 60p	Dot by dot	1280x720 60p	Dot by dot
4	1024x768 60Hz	1920x1080 60p	1920x1080 60p	Dot by dot	1920x1080 60p	Dot by dot
4	1024x768 70Hz	1920x1080 60p	1920x1080 60p	Dot by dot	1920x1080 60p	Dot by dot
4	1024x768 75Hz	1920x1080 60p	1920x1080 60p	Dot by dot	1920x1080 60p	Dot by dot
4	1024x768 85Hz	1920x1080 60p	1920x1080 60p	Dot by dot	1920x1080 60p	Dot by dot
4	1152x864 75Hz	1920x1080 60p	1920x1080 60p	Dot by dot	1920x1080 60p	Dot by dot

4	1280x720 50Hz (720P)	1280x720 60p	1280x720 60p	Full screen	1280x720 60p	Full screen
4	1280x720 60Hz (720P)	1280x720 60p	1280x720 60p	Full screen	1280x720 60p	Full screen
4	1280x768 60Hz	1920x1080 60p	1920x1080 60p	Dot by dot	1920x1080 60p	Dot by dot
4	1280x768 75Hz	1920x1080 60p	1920x1080 60p	Dot by dot	1920x1080 60p	Dot by dot
4	1280x768 80Hz	1920x1080 60p	1920x1080 60p	Dot by dot	1920x1080 60p	Dot by dot
4	1280x800 60hz	1920x1080 60p	1920x1080 60p	Dot by dot	1920x1080 60p	Dot by dot
4	1280x960 60Hz	1920x1080 60p	1920x1080 60p	Dot by dot	1920x1080 60p	Dot by dot
4	1280x960 85Hz	1920x1080 60p	1920x1080 60p	Dot by dot	1920x1080 60p	Dot by dot
4	1280x1024 60Hz	1920x1080 60p	1920x1080 60p	Dot by dot	1920x1080 60p	Dot by dot
4	1280x1024 75Hz	1920x1080 60p	1920x1080 60p	Dot by dot	1920x1080 60p	Dot by dot
4	1360x768 60Hz	1920x1080 60p	1920x1080 60p	Dot by dot	1920x1080 60p	Dot by dot
4	1400x1050 60Hz	1920x1080 60p	1920x1080 60p	Dot by dot	1920x1080 60p	Dot by dot
4	1400x1050 75Hz	1920x1080 60p	1920x1080 60p	Dot by dot	1920x1080 60p	Dot by dot
4	1440x900 60Hz	1920x1080 60p	1920x1080 60p	Dot by dot	1920x1080 60p	Dot by dot
4	1440x900 75Hz	1920x1080 60p	1920x1080 60p	Dot by dot	1920x1080 60p	Dot by dot
4	1600x1200 60Hz	1920x1080 60p	1920x1080 60p	Dot by dot	1920x1080 60p	Dot by dot
4	1680x1050 60Hz	1920x1080 60p	1920x1080 60p	Dot by dot	1920x1080 60p	Dot by dot
4	1920x1080 50Hz (1080P)	1920x1080 60p	1920x1080 60p	Full screen	1920x1080 60p	Full screen
4	1920x1080 60Hz (1080P)	1920x1080 60p	1920x1080 60p	Full screen	1920x1080 60p	Full screen

## HDC-4x Series Video Capture Card

### A.1.6 DVI Input, SW=5

Rotary Switch	Encode				Decode	
	Input Resolution (VGA)	HDCapture Application Selection (Encode)	Capture (Record) File Resolution	Output Display (Bypass Output)	HDCapture Application Selection (Decode)	Output Display (Decode Output)
5	640x350 85Hz	1280x720 60p	1280x720 60p	Keep aspect	1280x720 60p	Keep aspect
5	640x400 85Hz	1280x720 60p	1280x720 60p	Keep aspect	1280x720 60p	Keep aspect
5	720x400 85Hz	1280x720 60p	1280x720 60p	Keep aspect	1280x720 60p	Keep aspect
5	640x480 60Hz	1280x720 60p	1280x720 60p	Keep aspect	1280x720 60p	Keep aspect
5	640x480 72Hz	1280x720 60p	1280x720 60p	Keep aspect	1280x720 60p	Keep aspect
5	640x480 75Hz	1280x720 60p	1280x720 60p	Keep aspect	1280x720 60p	Keep aspect
5	640x480 85Hz	1280x720 60p	1280x720 60p	Keep aspect	1280x720 60p	Keep aspect
5	800x600 56Hz	1280x720 60p	1280x720 60p	Keep aspect	1280x720 60p	Keep aspect
5	800x600 60Hz	1280x720 60p	1280x720 60p	Keep aspect	1280x720 60p	Keep aspect
5	800x600 72Hz	1280x720 60p	1280x720 60p	Keep aspect	1280x720 60p	Keep aspect
5	800x600 75Hz	1280x720 60p	1280x720 60p	Keep aspect	1280x720 60p	Keep aspect
5	800x600 85Hz	1280x720 60p	1280x720 60p	Keep aspect	1280x720 60p	Keep aspect
5	848x480 60Hz	1280x720 60p	1280x720 60p	Keep aspect	1280x720 60p	Keep aspect
5	1024x768 60Hz	1920x1080 60p	1920x1080 60p	Keep aspect	1920x1080 60p	Keep aspect
5	1024x768 70Hz	1920x1080 60p	1920x1080 60p	Keep aspect	1920x1080 60p	Keep aspect
5	1024x768 75Hz	1920x1080 60p	1920x1080 60p	Keep aspect	1920x1080 60p	Keep aspect
5	1024x768 85Hz	1920x1080 60p	1920x1080 60p	Keep aspect	1920x1080 60p	Keep aspect
5	1152x864 75Hz	1920x1080 60p	1920x1080 60p	Keep aspect	1920x1080 60p	Keep aspect

5	1280x720 50Hz (720P)	1280x720 60p	1280x720 60p	Full screen	1280x720 60p	Full screen
5	1280x720 60Hz (720P)	1280x720 60p	1280x720 60p	Full screen	1280x720 60p	Full screen
5	1280x768 60Hz	1920x1080 60p	1920x1080 60p	Keep aspect	1920x1080 60p	Keep aspect
5	1280x768 75Hz	1920x1080 60p	1920x1080 60p	Keep aspect	1920x1080 60p	Keep aspect
5	1280x768 80Hz	1920x1080 60p	1920x1080 60p	Keep aspect	1920x1080 60p	Keep aspect
5	1280x800 60hz	1920x1080 60p	1920x1080 60p	Keep aspect	1920x1080 60p	Keep aspect
5	1280x960 60Hz	1920x1080 60p	1920x1080 60p	Keep aspect	1920x1080 60p	Keep aspect
5	1280x960 85Hz	1920x1080 60p	1920x1080 60p	Keep aspect	1920x1080 60p	Keep aspect
5	1280x1024 60Hz	1920x1080 60p	1920x1080 60p	Keep aspect	1920x1080 60p	Keep aspect
5	1280x1024 75Hz	1920x1080 60p	1920x1080 60p	Keep aspect	1920x1080 60p	Keep aspect
5	1360x768 60Hz	1920x1080 60p	1920x1080 60p	Keep aspect	1920x1080 60p	Keep aspect
5	1400x1050 60Hz	1920x1080 60p	1920x1080 60p	Keep aspect	1920x1080 60p	Keep aspect
5	1400x1050 75Hz	1920x1080 60p	1920x1080 60p	Keep aspect	1920x1080 60p	Keep aspect
5	1440x900 60Hz	1920x1080 60p	1920x1080 60p	Keep aspect	1920x1080 60p	Keep aspect
5	1440x900 75Hz	1920x1080 60p	1920x1080 60p	Keep aspect	1920x1080 60p	Keep aspect
5	1600x1200 60Hz	1920x1080 60p	1920x1080 60p	Keep aspect	1920x1080 60p	Keep aspect
5	1680x1050 60Hz	1920x1080 60p	1920x1080 60p	Keep aspect	1920x1080 60p	Keep aspect
5	1920x1080 50Hz (1080P)	1920x1080 60p	1920x1080 60p	Full screen	1920x1080 60p	Full screen
5	1920x1080 60Hz (1080P)	1920x1080 60p	1920x1080 60p	Full screen	1920x1080 60p	Full screen

## HDC-4x Series Video Capture Card

### A.1.7 VGA Input, SW=6

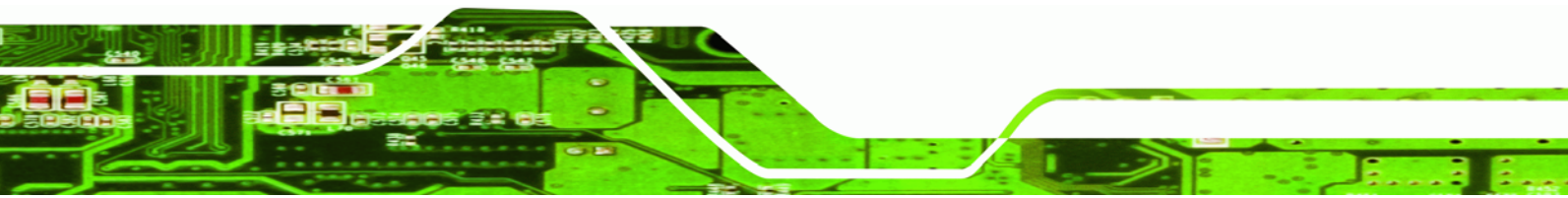
Rotary Switch	Encode				Decode	
	Input Resolution (VGA)	HDCapture Application Selection (Encode)	Capture (Record) File Resolution	Output Display (Bypass Output)	HDCapture Application Selection (Decode)	Output Display (Decode Output)
6	640x350 85Hz	1280x720 60p	1280x720 60p	Full screen	1280x720 60p	Full screen
6	640x400 85Hz	1280x720 60p	1280x720 60p	Full screen	1280x720 60p	Full screen
6	720x400 85Hz	1280x720 60p	1280x720 60p	Full screen	1280x720 60p	Full screen
6	640x480 60Hz	1280x720 60p	1280x720 60p	Full screen	1280x720 60p	Full screen
6	640x480 72Hz	1280x720 60p	1280x720 60p	Full screen	1280x720 60p	Full screen
6	640x480 75Hz	1280x720 60p	1280x720 60p	Full screen	1280x720 60p	Full screen
6	640x480 85Hz	1280x720 60p	1280x720 60p	Full screen	1280x720 60p	Full screen
6	800x600 56Hz	1280x720 60p	1280x720 60p	Full screen	1280x720 60p	Full screen
6	800x600 60Hz	1280x720 60p	1280x720 60p	Full screen	1280x720 60p	Full screen
6	800x600 72Hz	1280x720 60p	1280x720 60p	Full screen	1280x720 60p	Full screen
6	800x600 75Hz	1280x720 60p	1280x720 60p	Full screen	1280x720 60p	Full screen
6	800x600 85Hz	1280x720 60p	1280x720 60p	Full screen	1280x720 60p	Full screen
6	848x480 60Hz	1280x720 60p	1280x720 60p	Full screen	1280x720 60p	Full screen
6	1024x768 60Hz	1280x720 60p	1280x720 60p	Full screen	1280x720 60p	Full screen
6	1024x768 70Hz	1280x720 60p	1280x720 60p	Full screen	1280x720 60p	Full screen
6	1024x768 75Hz	1280x720 60p	1280x720 60p	Full screen	1280x720 60p	Full screen
6	1024x768 85Hz	1280x720 60p	1280x720 60p	Full screen	1280x720 60p	Full screen
6	1152x864 75Hz	1280x720 60p	1280x720 60p	Full screen	1280x720 60p	Full screen

6	1280x720 50Hz (720P)	1280x720 60p	1280x720 60p	Full screen	1280x720 60p	Full screen
6	1280x720 60Hz (720P)	1280x720 60p	1280x720 60p	Full screen	1280x720 60p	Full screen
6	1280x768 60Hz	1280x720 60p	1280x720 60p	Full screen	1280x720 60p	Full screen
6	1280x768 75Hz	1280x720 60p	1280x720 60p	Full screen	1280x720 60p	Full screen
6	1280x768 80Hz	1280x720 60p	1280x720 60p	Full screen	1280x720 60p	Full screen
6	1280x800 60Hz	1280x720 60p	1280x720 60p	Full screen	1280x720 60p	Full screen
6	1280x960 60Hz	1280x720 60p	1280x720 60p	Full screen	1280x720 60p	Full screen
6	1280x960 85Hz	1280x720 60p	1280x720 60p	Full screen	1280x720 60p	Full screen
6	1280x1024 60Hz	1280x720 60p	1280x720 60p	Full screen	1280x720 60p	Full screen
6	1280x1024 75Hz	1280x720 60p	1280x720 60p	Full screen	1280x720 60p	Full screen
6	1360x768 60Hz	1280x720 60p	1280x720 60p	Full screen	1280x720 60p	Full screen
6	1400x1050 60Hz	1280x720 60p	1280x720 60p	Full screen	1280x720 60p	Full screen
6	1400x1050 75Hz	1280x720 60p	1280x720 60p	Full screen	1280x720 60p	Full screen
6	1440x900 60Hz	1280x720 60p	1280x720 60p	Full screen	1280x720 60p	Full screen
6	1440x900 75Hz	1280x720 60p	1280x720 60p	Full screen	1280x720 60p	Full screen
6	1600x1200 60Hz	1280x720 60p	1280x720 60p	Full screen	1280x720 60p	Full screen
6	1680x1050 60Hz	1280x720 60p	1280x720 60p	Full screen	1280x720 60p	Full screen
6	1920x1080 50Hz (1080P)	1920x1080 60p	1280x720 60p	Full screen	1280x720 60p	Full screen
6	1920x1080 60Hz (1080P)	1920x1080 60p	1280x720 60p	Full screen	1280x720 60p	Full screen

## HDC-4x Series Video Capture Card

### A.1.8 DVI Input, SW=7

Rotary Switch	Encode				Decode	
	Input Resolution (VGA)	HDCapture Application Selection (Encode)	Capture (Record) File Resolution	Output Display (Bypass Output)	HDCapture Application Selection (Decode)	Output Display (Decode Output)
7	640x350 85Hz	1280x720 60p	1280x720 60p	Full screen	1280x720 60p	Full screen
7	640x400 85Hz	1280x720 60p	1280x720 60p	Full screen	1280x720 60p	Full screen
7	720x400 85Hz	1280x720 60p	1280x720 60p	Full screen	1280x720 60p	Full screen
7	640x480 60Hz	1280x720 60p	1280x720 60p	Full screen	1280x720 60p	Full screen
7	640x480 72Hz	1280x720 60p	1280x720 60p	Full screen	1280x720 60p	Full screen
7	640x480 75Hz	1280x720 60p	1280x720 60p	Full screen	1280x720 60p	Full screen
7	640x480 85Hz	1280x720 60p	1280x720 60p	Full screen	1280x720 60p	Full screen
7	800x600 56Hz	1280x720 60p	1280x720 60p	Full screen	1280x720 60p	Full screen
7	800x600 60Hz	1280x720 60p	1280x720 60p	Full screen	1280x720 60p	Full screen
7	800x600 72Hz	1280x720 60p	1280x720 60p	Full screen	1280x720 60p	Full screen
7	800x600 75Hz	1280x720 60p	1280x720 60p	Full screen	1280x720 60p	Full screen
7	800x600 85Hz	1280x720 60p	1280x720 60p	Full screen	1280x720 60p	Full screen
7	848x480 60Hz	1280x720 60p	1280x720 60p	Full screen	1280x720 60p	Full screen
7	1024x768 60Hz	1280x720 60p	1280x720 60p	Full screen	1280x720 60p	Full screen
7	1024x768 70Hz	1280x720 60p	1280x720 60p	Full screen	1280x720 60p	Full screen
7	1024x768 75Hz	1280x720 60p	1280x720 60p	Full screen	1280x720 60p	Full screen
7	1024x768 85Hz	1280x720 60p	1280x720 60p	Full screen	1280x720 60p	Full screen
7	1152x864 75Hz	1280x720 60p	1280x720 60p	Full screen	1280x720 60p	Full screen





7	1280x720 50Hz (720P)	1280x720 60p	1280x720 60p	Full screen	1280x720 60p	Full screen
7	1280x720 60Hz (720P)	1280x720 60p	1280x720 60p	Full screen	1280x720 60p	Full screen
7	1280x768 60Hz	1280x720 60p	1280x720 60p	Full screen	1280x720 60p	Full screen
7	1280x768 75Hz	1280x720 60p	1280x720 60p	Full screen	1280x720 60p	Full screen
7	1280x768 80Hz	1280x720 60p	1280x720 60p	Full screen	1280x720 60p	Full screen
7	1280x800 60Hz	1280x720 60p	1280x720 60p	Full screen	1280x720 60p	Full screen
7	1280x960 60Hz	1280x720 60p	1280x720 60p	Full screen	1280x720 60p	Full screen
7	1280x960 85Hz	1280x720 60p	1280x720 60p	Full screen	1280x720 60p	Full screen
7	1280x1024 60Hz	1280x720 60p	1280x720 60p	Full screen	1280x720 60p	Full screen
7	1280x1024 75Hz	1280x720 60p	1280x720 60p	Full screen	1280x720 60p	Full screen
7	1360x768 60Hz	1280x720 60p	1280x720 60p	Full screen	1280x720 60p	Full screen
7	1400x1050 60Hz	1280x720 60p	1280x720 60p	Full screen	1280x720 60p	Full screen
7	1400x1050 75Hz	1280x720 60p	1280x720 60p	Full screen	1280x720 60p	Full screen
7	1440x900 60Hz	1280x720 60p	1280x720 60p	Full screen	1280x720 60p	Full screen
7	1440x900 75Hz	1280x720 60p	1280x720 60p	Full screen	1280x720 60p	Full screen
7	1600x1200 60Hz	1280x720 60p	1280x720 60p	Full screen	1280x720 60p	Full screen
7	1680x1050 60Hz	1280x720 60p	1280x720 60p	Full screen	1280x720 60p	Full screen
7	1920x1080 50Hz (1080P)	1920x1080 60p	1280x720 60p	Full screen	1280x720 60p	Full screen
7	1920x1080 60Hz (1080P)	1920x1080 60p	1280x720 60p	Full screen	1280x720 60p	Full screen

## HDC-4x Series Video Capture Card

### A.1.9 VGA Input, SW=8

Rotary Switch	Encode				Decode	
	Input Resolution (VGA)	HDCapture Application Selection (Encode)	Capture (Record) File Resolution	Output Display (Bypass Output)	HDCapture Application Selection (Decode)	Output Display (Decode Output)
8	640x350 85Hz	1920x1080 60p	1920x1080 60p	Full screen	1920x1080 60p	Full screen
8	640x400 85Hz	1920x1080 60p	1920x1080 60p	Full screen	1920x1080 60p	Full screen
8	720x400 85Hz	1920x1080 60p	1920x1080 60p	Full screen	1920x1080 60p	Full screen
8	640x480 60Hz	1920x1080 60p	1920x1080 60p	Full screen	1920x1080 60p	Full screen
8	640x480 72Hz	1920x1080 60p	1920x1080 60p	Full screen	1920x1080 60p	Full screen
8	640x480 75Hz	1920x1080 60p	1920x1080 60p	Full screen	1920x1080 60p	Full screen
8	640x480 85Hz	1920x1080 60p	1920x1080 60p	Full screen	1920x1080 60p	Full screen
8	800x600 56Hz	1920x1080 60p	1920x1080 60p	Full screen	1920x1080 60p	Full screen
8	800x600 60Hz	1920x1080 60p	1920x1080 60p	Full screen	1920x1080 60p	Full screen
8	800x600 72Hz	1920x1080 60p	1920x1080 60p	Full screen	1920x1080 60p	Full screen
8	800x600 75Hz	1920x1080 60p	1920x1080 60p	Full screen	1920x1080 60p	Full screen
8	800x600 85Hz	1920x1080 60p	1920x1080 60p	Full screen	1920x1080 60p	Full screen
8	848x480 60Hz	1920x1080 60p	1920x1080 60p	Full screen	1920x1080 60p	Full screen
8	1024x768 60Hz	1920x1080 60p	1920x1080 60p	Full screen	1920x1080 60p	Full screen
8	1024x768 70Hz	1920x1080 60p	1920x1080 60p	Full screen	1920x1080 60p	Full screen
8	1024x768 75Hz	1920x1080 60p	1920x1080 60p	Full screen	1920x1080 60p	Full screen
8	1024x768 85Hz	1920x1080 60p	1920x1080 60p	Full screen	1920x1080 60p	Full screen
8	1152x864 75Hz	1920x1080 60p	1920x1080 60p	Full screen	1920x1080 60p	Full screen

8	1280x720 50Hz (720P)	1280x720 60p	1920x1080 60p	Full screen	1920x1080 60p	Full screen
8	1280x720 60Hz (720P)	1280x720 60p	1920x1080 60p	Full screen	1920x1080 60p	Full screen
8	1280x768 60Hz	1920x1080 60p	1920x1080 60p	Full screen	1920x1080 60p	Full screen
8	1280x768 75Hz	1920x1080 60p	1920x1080 60p	Full screen	1920x1080 60p	Full screen
8	1280x768 80Hz	1920x1080 60p	1920x1080 60p	Full screen	1920x1080 60p	Full screen
8	1280x800 60Hz	1920x1080 60p	1920x1080 60p	Full screen	1920x1080 60p	Full screen
8	1280x960 60Hz	1920x1080 60p	1920x1080 60p	Full screen	1920x1080 60p	Full screen
8	1280x960 85Hz	1920x1080 60p	1920x1080 60p	Full screen	1920x1080 60p	Full screen
8	1280x1024 60Hz	1920x1080 60p	1920x1080 60p	Full screen	1920x1080 60p	Full screen
8	1280x1024 75Hz	1920x1080 60p	1920x1080 60p	Full screen	1920x1080 60p	Full screen
8	1360x768 60Hz	1920x1080 60p	1920x1080 60p	Full screen	1920x1080 60p	Full screen
8	1400x1050 60Hz	1920x1080 60p	1920x1080 60p	Full screen	1920x1080 60p	Full screen
8	1400x1050 75Hz	1920x1080 60p	1920x1080 60p	Full screen	1920x1080 60p	Full screen
8	1440x900 60Hz	1920x1080 60p	1920x1080 60p	Full screen	1920x1080 60p	Full screen
8	1440x900 75Hz	1920x1080 60p	1920x1080 60p	Full screen	1920x1080 60p	Full screen
8	1600x1200 60Hz	1920x1080 60p	1920x1080 60p	Full screen	1920x1080 60p	Full screen
8	1680x1050 60Hz	1920x1080 60p	1920x1080 60p	Full screen	1920x1080 60p	Full screen
8	1920x1080 50Hz (1080P)	1920x1080 60p	1920x1080 60p	Full screen	1920x1080 60p	Full screen
8	1920x1080 60Hz (1080P)	1920x1080 60p	1920x1080 60p	Full screen	1920x1080 60p	Full screen

## HDC-4x Series Video Capture Card

### A.1.10 DVI Input, SW=9

Rotary Switch	Encode				Decode	
	Input Resolution (VGA)	HDCapture Application Selection (Encode)	Capture (Record) File Resolution	Output Display (Bypass Output)	HDCapture Application Selection (Decode)	Output Display (Decode Output)
9	640x350 85Hz	1920x1080 60p	1920x1080 60p	Full screen	1920x1080 60p	Full screen
9	640x400 85Hz	1920x1080 60p	1920x1080 60p	Full screen	1920x1080 60p	Full screen
9	720x400 85Hz	1920x1080 60p	1920x1080 60p	Full screen	1920x1080 60p	Full screen
9	640x480 60Hz	1920x1080 60p	1920x1080 60p	Full screen	1920x1080 60p	Full screen
9	640x480 72Hz	1920x1080 60p	1920x1080 60p	Full screen	1920x1080 60p	Full screen
9	640x480 75Hz	1920x1080 60p	1920x1080 60p	Full screen	1920x1080 60p	Full screen
9	640x480 85Hz	1920x1080 60p	1920x1080 60p	Full screen	1920x1080 60p	Full screen
9	800x600 56Hz	1920x1080 60p	1920x1080 60p	Full screen	1920x1080 60p	Full screen
9	800x600 60Hz	1920x1080 60p	1920x1080 60p	Full screen	1920x1080 60p	Full screen
9	800x600 72Hz	1920x1080 60p	1920x1080 60p	Full screen	1920x1080 60p	Full screen
9	800x600 75Hz	1920x1080 60p	1920x1080 60p	Full screen	1920x1080 60p	Full screen
9	800x600 85Hz	1920x1080 60p	1920x1080 60p	Full screen	1920x1080 60p	Full screen
9	848x480 60Hz	1920x1080 60p	1920x1080 60p	Full screen	1920x1080 60p	Full screen
9	1024x768 60Hz	1920x1080 60p	1920x1080 60p	Full screen	1920x1080 60p	Full screen
9	1024x768 70Hz	1920x1080 60p	1920x1080 60p	Full screen	1920x1080 60p	Full screen
9	1024x768 75Hz	1920x1080 60p	1920x1080 60p	Full screen	1920x1080 60p	Full screen
9	1024x768 85Hz	1920x1080 60p	1920x1080 60p	Full screen	1920x1080 60p	Full screen
9	1152x864 75Hz	1920x1080 60p	1920x1080 60p	Full screen	1920x1080 60p	Full screen

9	1280x720 50Hz (720P)	1280x720 60p	1920x1080 60p	Full screen	1920x1080 60p	Full screen
9	1280x720 60Hz (720P)	1280x720 60p	1920x1080 60p	Full screen	1920x1080 60p	Full screen
9	1280x768 60Hz	1920x1080 60p	1920x1080 60p	Full screen	1920x1080 60p	Full screen
9	1280x768 75Hz	1920x1080 60p	1920x1080 60p	Full screen	1920x1080 60p	Full screen
9	1280x768 80Hz	1920x1080 60p	1920x1080 60p	Full screen	1920x1080 60p	Full screen
9	1280x800 60hz	1920x1080 60p	1920x1080 60p	Full screen	1920x1080 60p	Full screen
9	1280x960 60Hz	1920x1080 60p	1920x1080 60p	Full screen	1920x1080 60p	Full screen
9	1280x960 85Hz	1920x1080 60p	1920x1080 60p	Full screen	1920x1080 60p	Full screen
9	1280x1024 60Hz	1920x1080 60p	1920x1080 60p	Full screen	1920x1080 60p	Full screen
9	1280x1024 75Hz	1920x1080 60p	1920x1080 60p	Full screen	1920x1080 60p	Full screen
9	1360x768 60Hz	1920x1080 60p	1920x1080 60p	Full screen	1920x1080 60p	Full screen
9	1400x1050 60Hz	1920x1080 60p	1920x1080 60p	Full screen	1920x1080 60p	Full screen
9	1400x1050 75Hz	1920x1080 60p	1920x1080 60p	Full screen	1920x1080 60p	Full screen
9	1440x900 60Hz	1920x1080 60p	1920x1080 60p	Full screen	1920x1080 60p	Full screen
9	1440x900 75Hz	1920x1080 60p	1920x1080 60p	Full screen	1920x1080 60p	Full screen
9	1600x1200 60Hz	1920x1080 60p	1920x1080 60p	Full screen	1920x1080 60p	Full screen
9	1680x1050 60Hz	1920x1080 60p	1920x1080 60p	Full screen	1920x1080 60p	Full screen
9	1920x1080 50Hz (1080P)	1920x1080 60p	1920x1080 60p	Full screen	1920x1080 60p	Full screen
9	1920x1080 60Hz (1080P)	1920x1080 60p	1920x1080 60p	Full screen	1920x1080 60p	Full screen

Appendix

**B**

# Hazardous Materials Disclosure

---

## **B.1 Hazardous Material Disclosure Table for IPB Products Certified as RoHS Compliant Under 2002/95/EC Without Mercury**

The details provided in this appendix are to ensure that the product is compliant with the Peoples Republic of China (China) RoHS standards. The table below acknowledges the presences of small quantities of certain materials in the product, and is applicable to China RoHS only.

A label will be placed on each product to indicate the estimated “Environmentally Friendly Use Period” (EFUP). This is an estimate of the number of years that these substances would “not leak out or undergo abrupt change.” This product may contain replaceable sub-assemblies/components which have a shorter EFUP such as batteries and lamps. These components will be separately marked.

Please refer to the table on the next page.

## HDC-4x Series Video Capture Card

Part Name	Toxic or Hazardous Substances and Elements					
	Lead (Pb)	Mercury (Hg)	Cadmium (Cd)	Hexavalent Chromium (CR(VI))	Polybrominated Biphenyls (PBB)	Polybrominated Diphenyl Ethers (PBDE)
Housing	X	O	O	O	O	X
Display	X	O	O	O	O	X
Printed Circuit Board	X	O	O	O	O	X
Metal Fasteners	X	O	O	O	O	O
Cable Assembly	X	O	O	O	O	X
Fan Assembly	X	O	O	O	O	X
Power Supply Assemblies	X	O	O	O	O	X
Battery	O	O	O	O	O	O

O: This toxic or hazardous substance is contained in all of the homogeneous materials for the part is below the limit requirement in SJ/T11363-2006

X: This toxic or hazardous substance is contained in at least one of the homogeneous materials for this part is above the limit requirement in SJ/T11363-2006



此附件旨在确保本产品符合中国 RoHS 标准。以下表格标示此产品中某有毒物质的含量符合中国 RoHS 标准规定的限量要求。

本产品上会附有“环境友好使用期限”的标签，此期限是估算这些物质“不会有泄漏或突变”的年限。本产品可能包含有较短的环境友好使用期限的可替换元件，像是电池或灯管，这些元件将会单独标示出来。

部件名称	有毒有害物质或元素					
	铅 (Pb)	汞 (Hg)	镉 (Cd)	六价铬 (CR(VI))	多溴联苯 (PBB)	多溴二苯醚 (PBDE)
壳体	X	O	O	O	O	X
显示	X	O	O	O	O	X
印刷电路板	X	O	O	O	O	X
金属螺帽	X	O	O	O	O	O
电缆组装	X	O	O	O	O	X
风扇组装	X	O	O	O	O	X
电力供应组装	X	O	O	O	O	X
电池	O	O	O	O	O	O

O: 表示该有毒有害物质在该部件所有物质材料中的含量均在SJ/T11363-2006 标准规定的限量要求以下。  
X: 表示该有毒有害物质至少在该部件的某一均质材料中的含量超出SJ/T11363-2006 标准规定的限量要求。