

IMC-121FB Series

➤ **Industrial mini type Ethernet to fiber media converter with 2x10/100Base-T(X) and 1x100Base-FX**

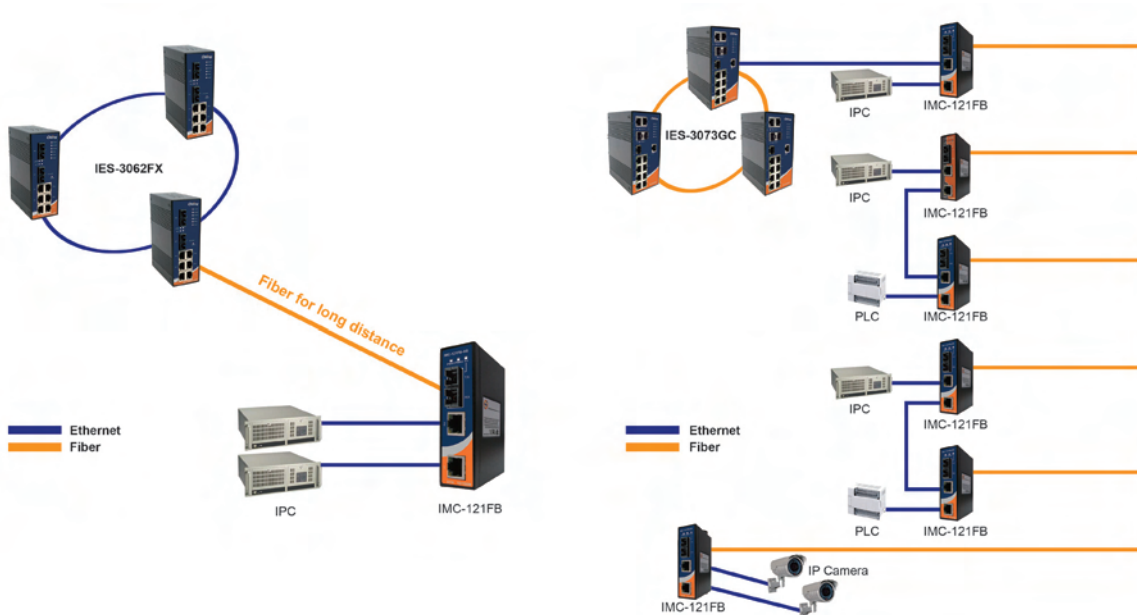
Features

- Support 2 ports 10/100Base-T(X) auto-negotiation and auto-MDI/MDI-X
- 2x10/100 Base-T(X) ports to save the usage of copper ports
- High reliability and rigid IP-30 housing
- DIN-Rail and wall mounting enabled



Introduction

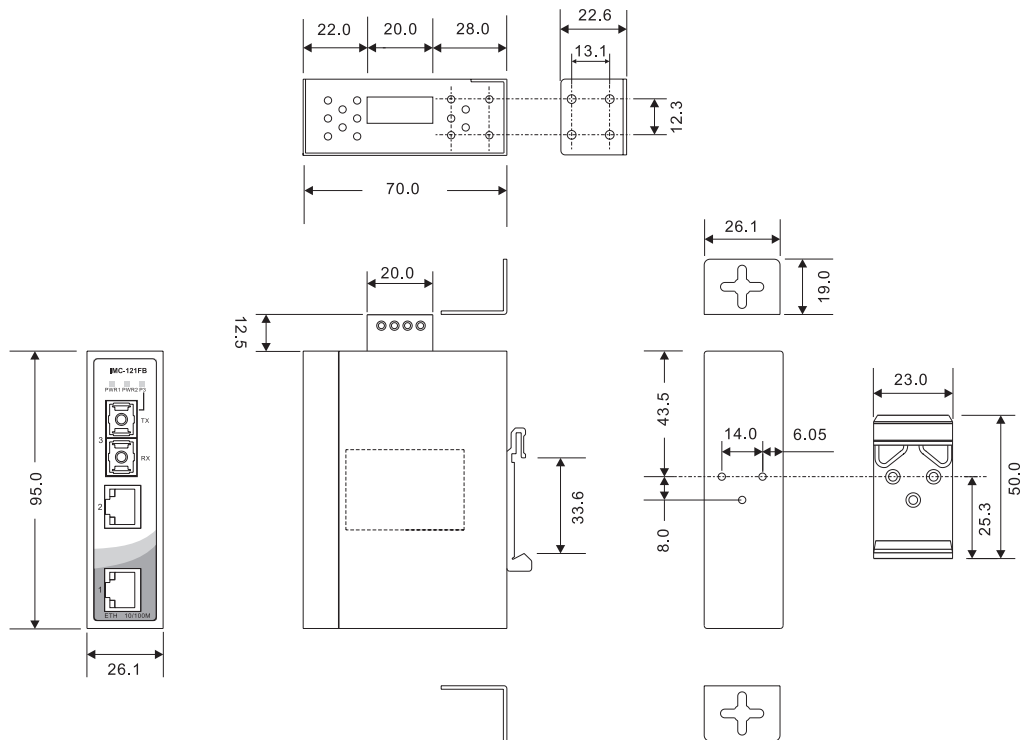
IMC-121FB series are industrial media converters providing media conversion between 10/100Base-T(X) and 100Base-FX. IMC-121FB series feature rigid IP-30 housing design and support wide operating temperature range from -40 to 70°C. Therefore, IMC-121FB series are reliable media converter and can satisfy most demands of operating environments.



Connections of Ethernet Media Converter

Industrial Ethernet Switch
 Industrial Media Converter
 Industrial Device Server
 Industrial Wireless Access Point
 Industrial Cellular VPN Router
 Industrial M2M Gateway
 Accessories
 Network Management Software

Dimensions



(Unit=mm)

Specifications

ORing Media Converter Model		IMC-121FB-MM-SC	IMC-121FB-SS-SC
Physical Ports			
10/100Base-T(X) Ports in RJ45 Auto MDI/MDIX		2	2
100Base-FX fiber Port			
Fiber Ports Specifications	Fiber Ports Number	1	1
	Fiber Ports Standard	100Base - FX	100Base - FX
	Fiber Mode	Multi-mode	Single-mode
	Fiber Diameter (μm)	62.5/125 μm 50/125 μm	9/125 μm
	Fiber Optical Connector	SC	SC
	Typical Distance (km)	2 km	30 km
	Wavelength (nm)	1310 nm	1310 nm
	Max. Output Optical Power (dBm)	-14 dBm	-8 dBm
	Min. Output Optical Power (dBm)	-23.5 dBm	-15 dBm
	Max. Input Optical Power (Saturation)	0 dBm	0 dBm
	Min. Input Optical Power (Sensitivity)	-31 dBm	-34 dBm
	Link Budget (dB)	7.5 dB	19 dB
Technology			
Ethernet Standards		IEEE 802.3 for 10Base-T IEEE 802.3u for 100Base-TX and 100Base-FX	

LED Indicators	
Power Indicator	Green : Power LED x 2
10/100Base-T(X) RJ45 Port Indicator	Green for port Link/Act. Amber for Duplex/Collision
100Base-FX Fiber Port Indicator	Green for fiber port Link/Act
Power	
Input Power	Dual 12~48 VDC power input at 4-pin terminal block
Power Consumption (Typ.)	4.5 Watts
Overload Current Protection	Present
Reverse Polarity Protection	Present
Physical Characteristics	
Enclosure	IP-30
Dimensions (W x D x H)	26.1 (W) x 70 (D) x 95 (H)mm (1.03 x 2.76 x 3.74 inch)
Weight (g)	210 g
Environmental	
Storage Temperature	-40 to 85°C (-40 to 185°F)
Operating Temperature	-40 to 70°C (-40 to 158°F)
Operating Humidity	5% to 95% Non-condensing
Regulatory Approvals	
EMI	FCC Part 15, CISPR (EN55022) class A
EMS	EN61000-4-2 (ESD), EN61000-4-3 (RS), EN61000-4-4 (EFT), EN61000-4-5 (Surge), EN61000-4-6 (CS), EN61000-4-8, EN61000-4-11
Shock	IEC60068-2-27
Free Fall	IEC60068-2-32
Vibration	IEC60068-2-6
Safety	EN60950-1
MTBF (Hours) (MIL-HDBK-217F2, GB, GC, 25°C)	1,023,458
Warranty	5 years

Ordering Information

IMC-1 **A** **B** **C** **B** - **DD** - **EE**

Code Definition	10/100Base-T(X) Port Number	Fiber Port Number	Fiber Port Type	Fiber Optical Mode	Fiber Optical Connector
Option	- 2 : 2 port	- 1 : 1 port	- F : 100Base-FX	- MM : Multi-mode - SS : Single-mode	- SC : SC Connector

	Model Name	Description
Available Model	IMC-121FB-MM-SC	Industrial mini type Ethernet to fiber media converter with 2x10/100Base-T(X) and 1x100Base-FX, multi-mode, 2km/1310nm, SC connector
	IMC-121FB-SS-SC	Industrial min type Ethernet to fiber media converter with 2x10/100Base-T(X) and 1x100Base-FX, single-mode, 30km/1310nm, SC connector

Packing List

- IMC-121FB
- DIN-Rail Kit
- Wall-Mount Kit
- Quick Installation Guide

Optional Accessories (Can be purchased separately)

- DR-45 series, 45W DIN-Rail power supply
- DR-75 series, 75W DIN-Rail power supply
- DR-120 series, 120W DIN-Rail power supply
- SDR-240-48, 240W DIN-Rail power supply
- SDR-480-48, 480W DIN-Rail power supply
- FPC series : Fiber Patch cord