

PCIER-K101L-R10

1-slot PCIe x1 riser card

Quick Installation Guide

Ver. 1.0

1. Ordering Information

PCIER-K101L-R10

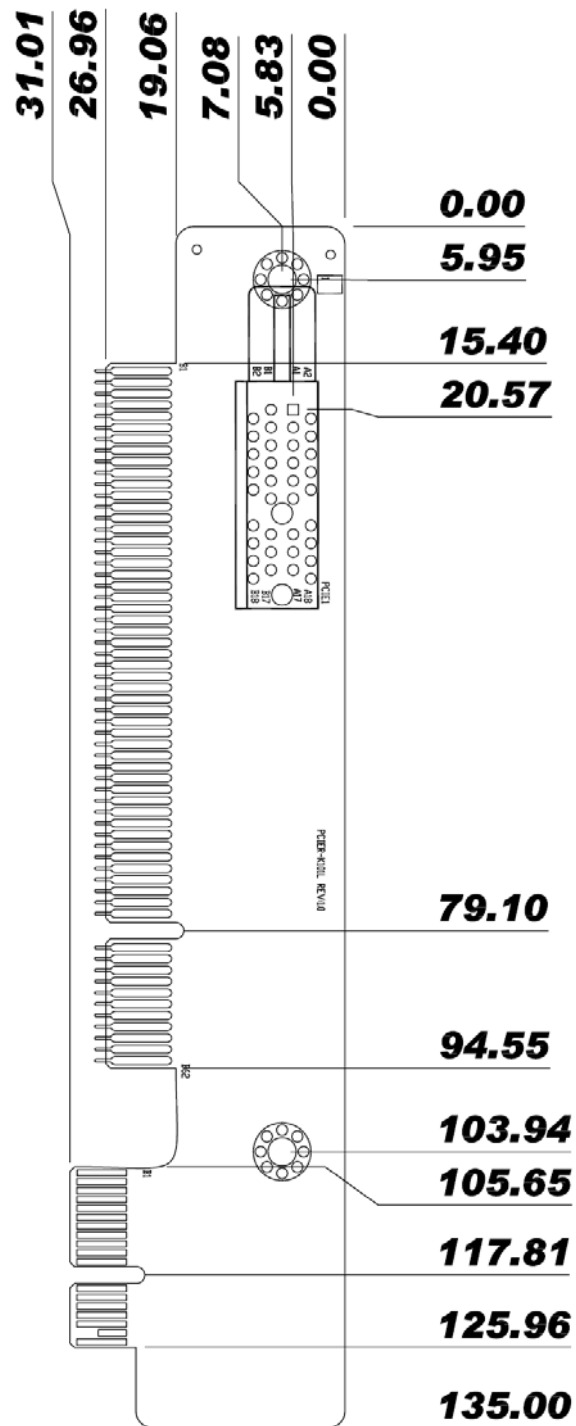
PClex1 riser card for IEI Mini-ITX SBC, compatible with KINO-PVN-D5251, KINO-PV-D5252, KINO-PV-D5253 SBC

2. Table of connector

ITEM	LABEL	FUNCTION
1.1	PCIE_X1	PCIe x1 slot

PCIE_X1 : PClex1 Connector			
PIN	Description	PIN	Description
A1	PRSNT1#	B1	+12V
A2	+12V	B2	+12V
A3	+12V	B3	RSVD
A4	GND	B4	GND
A5	JTAG2	B5	SMCLK
A6	JTAG3	B6	SMDAT
A7	JTAG4	B7	GND
A8	JTAG5	B8	+3.3V
A9	+3.3V	B9	JTAG1
A10	+3.3V	B10	3.3Vaux
A11	PERST#	B11	WAKE#
A12	GND	B12	RSVD
A13	REFCLK+	B13	GND
A14	REFCLK-	B14	PETp0
A15	GND	B15	PETn0
A16	PERp0	B16	GND
A17	PERn0	B17	PRSNT2#
A18	GND	B18	GND

3. Board Dimensions:



4. Packing List

- 1 x PCIe x1 riser card
- 1 x QIG