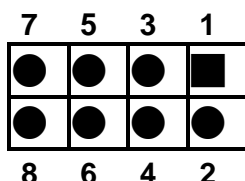


# PE-13SD-R40

## 13-Slot PICMG 1.3 PCIe to PCI Bridge Backplane User Manual Ver. 4.0

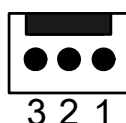
1. **USB1, USB2: External 4 Port USB Connectors From the Mainboard(System1)**

**USB\_A1、USB\_A2: External 4 Port USB Connectors From the Mainboard(System2)**



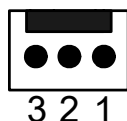
PIN	DESCRIPTION	PIN	DESCRIPTION
1	USBVCC	2	GND
3	DATA-	4	DATA+
5	DATA+	6	DATA-
7	GND	8	USBVCC

2. **FAN1, FAN2, FAN3, FAN4: Fan Connector (System1)**  
**FAN\_A1、FAN\_A2、FAN\_A3、FAN\_A4: Fan Connector (System2)**



PIN	DESCRIPTION
1	GND
2	+12V
3	NC

3. **ATXCTL1: Backplane to Mainboard ATX Power Control Connector (System1)**  
**ATXCTL\_A1: Backplane to Mainboard ATX Power Control Connector (System2)**



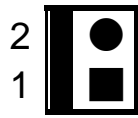
PIN	DESCRIPTION
1	GND
2	PSO#
3	5VSB

4. **PWRBTN: External Power On Button (System1)**  
**PWRBTN\_A1: External Power On Button (System2)**



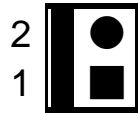
PIN	DESCRIPTION
1	GND
2	PWRBT#

5. **RESET: External Reset Button Connector (System1)**  
**RESET\_A1: External Reset Button Connector (System2)**



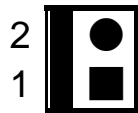
PIN	DESCRIPTION
1	GND
2	SHB_RST#

6. **PWRGD: External Power Good Connector (System1)**  
**PWRGD\_A1: External Power Good Connector (System2)**



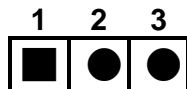
PIN	DESCRIPTION
1	GND
2	PWRGD

7. **SM-BUS: External System Management BUS Connector(System1)**  
**SM-BUS\_A1: External System Management BUS Connector(System2)**



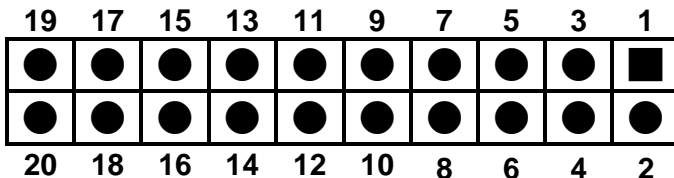
PIN	DESCRIPTION
1	SMDAT
2	SMCLK

8. **CN1: PCIE X16 SDVO Control Signal Pin(System1)**  
**CN\_A1: PCIE X16 SDVO Control Signal Pin(System2)**



PIN	DESCRIPTION
1	EXP_EN
2	SDVO_CLK
3	SDVO_DAT

9. **IOPWR: The I/O Power Connector indicators for controlling your CPU board (System1)**  
**IOPWR\_A1: The I/O Power Connector indicators for controlling your CPU board (System2)**



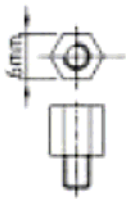
PIN	DESCRIPTION	PIN	DESCRIPTION
1	GND	2	-12V
3	+12V	4	GND
5	IPMB_DA	6	5VSB
7	GND	8	GND
9	IPMB_CL	10	5VSB
11	+5V	12	PWRGD
13	SMDAT	14	SHB_RST#
15	5VSB	16	GND
17	SMCLK	18	PSOEN#
19	+3.3V	20	PWRBT#

## 10. PCI routing table:

SIGNAL	REQ#	GNT#	IDSEL	INTA#	INTB#	INTC#	INTD#
PIN No.	B18	A17	A26	A6	B7	A7	B8
PCI1 & PCI_A1	REQ0#	GNT0#	AD31	B	C	D	A
PCI2 & PCI_A2	REQ1#	GNT1#	AD30	C	D	A	B

## 11. Notice:

- a. Recommend to use 6mm width spacer to install



- b. Torsion must less than 6lb-inch

## 12. Dimension:

