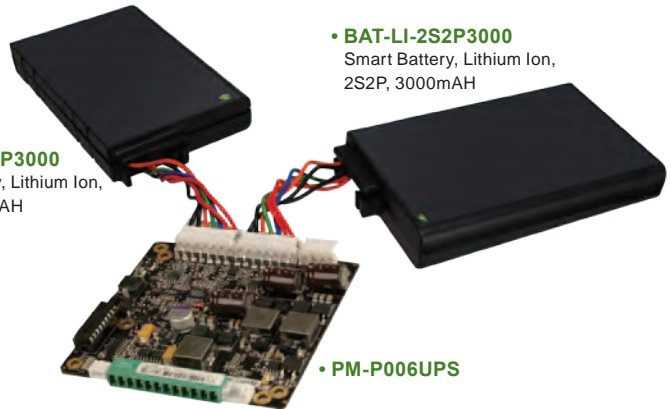
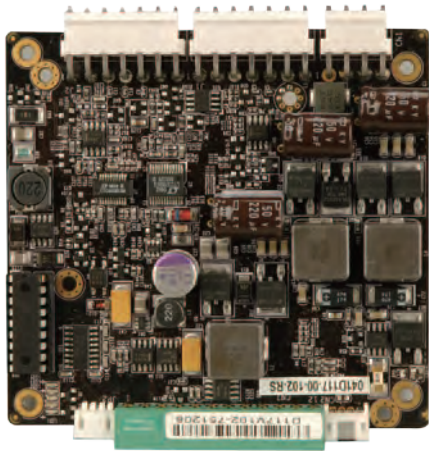


# PM-P006UPS

65 W DC/DC Converter Module, with UPS



• **BAT-LI-2S2P3000**  
Smart Battery, Lithium Ion,  
2S2P, 3000mAH

• **BAT-LI-2S2P3000**  
Smart Battery, Lithium Ion,  
2S2P, 3000mAH

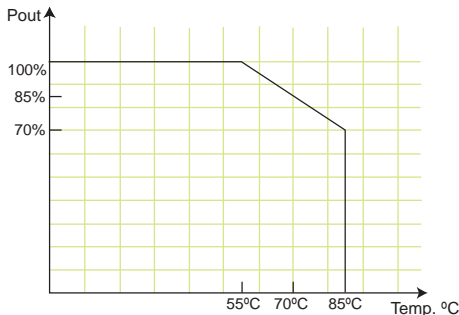
• **PM-P006UPS**

## Features

1. Load down protection
2. Over voltage protection
3. Short circuit protection
4. Over current protection
5. Smart battery charger for Lithium Ion
6. I/O interface: SMBus/I2C & RS-232
7. Support up to two battery packs
8. AT/ATX modes
9. Utility program: pull data out through RS-232 to a system

## Specifications

- Output (max.): 12 V@4 A, 5 V@10 A, 3.3 V@8 A, 5 VSB@1 A, & -12 V @0.1 A  
Max. total output: 65 W
- Input: 6 VDC to 36 VDC
- Battery charge voltage: 12 V ~ 36 V
- Efficiency: up to 90%
- Dimensions: 90 mm x 96 mm
- Weight: NW: 178 g
- Operating temperature: -20°C ~ 85°C (without smart battery)  
Operating temperature: -10°C ~ 60°C (w/With smart battery)
- Storage temperature: -35°C ~ 95°C



## Applications



Battery backup system

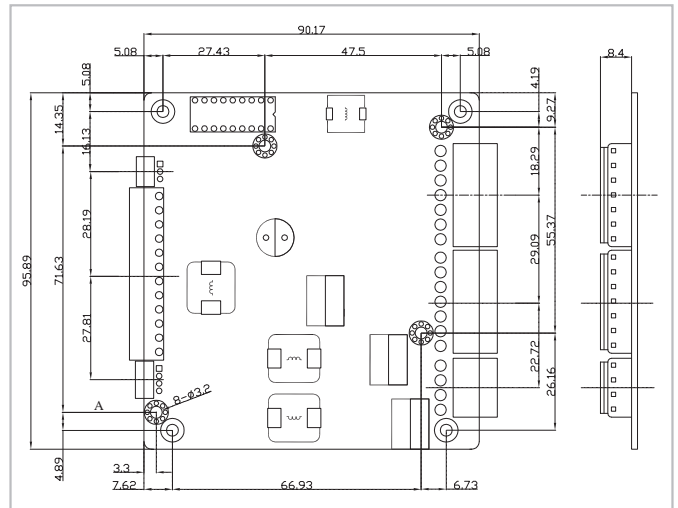


Portable equipment



Power sensitive equipment

## Dimensions (Unit: mm)



## Packing Information

- 1 x PM-P006UPS
- 1 x QIG
- 1 x Utility CD
- 1 x DB-9 pin connector cable (32100-157200-RS)

## Ordering Information

Part No.	Description
PM-P006UPS-R10	65 W ATX DC/DC 6-36 VDC input, 12 V, 5 V, 3.3 V, -12 V and 5 VSB PC/104 power module with UPS
BAT-LI-2S2P3000-R10	Smart Battery, Lithium Ion, 2S2P, 3000 mAH
CB-JST3PSW001-RS	30 cm power on/off switch cable
CB-P1LP4-RS	20 cm cable for FSP0601AD101C 60 W/ UP0451E12P 45 W/ UP0251E12PL 25 W AC-DC adapter
CB-MD4P4-RS	16 cm cable for 63000-FSP120AAB-RS 120 W AC-DC adapter
CB-NOLP4-RS	20 cm cable for terminal block DC input

1

Industrial Computing Solutions

2

Video Capture Solutions

3

Embedded Computing Solutions

4

Automation Control

5

ORing Network Communication

6

Power Supply/ Peripherals

7

Panel Solutions Introduction